

## DATASHEET

# EEF2 Mouse Monoclonal Antibody(C3321)

CAT. NO. AMA02933

### KEY FEATURES

Target	EEF2	Source / Host	Mouse
Reactivity	Human	Clonality	Monoclonal
Applications	WB, IF/ICC, ChIP	Conjugation	Unconjugated
Form / Buffer	Liquid in PBS containing 50% glycerol, 0.5% BSA and 0.02% sodium azide, pH 7.3.	Storage	at-20°C

### BACKGROUND

Catalyzes the GTP-dependent ribosomal translocation step during translation elongation . During this step, the ribosome changes from the pre-translocational (PRE) to the post-translocational (POST) state as the newly formed A-site-bound peptidyl-tRNA and P-site-bound deacylated tRNA move to the P and E sites, respectively . Catalyzes the coordinated movement of the two tRNA molecules, the mRNA and conformational changes in the ribosome .

### APPLICATION

To ensure optimal assay performance, AREX recommends conducting reagent titration tailored to each testing system for optimal detection results.

WB	1:500 - 1:1000
IF/ICC	1:50 - 1:100
ChIP	1:10 - 1:50

\*Results are sample-specific. Please refer to your local assay conditions and test parameters for reference.

### PRODUCT OVERVIEW

Description	Mouse monoclonal antibody to EEF2
Specificity	Recognizes endogenous levels of EEF2 protein.
Antibody Type	Primary antibody
Immunogen	Purified recombinant human eEF2 protein fragments expressed in E.coli.
Purification	The antibody was purified by immunogen affinity chromatography.
Molecular Weight	Predicted: 95 kD; Observed: 95 kD
Form/Buffer	Liquid in PBS containing 50% glycerol, 0.5% BSA and 0.02% sodium azide, pH 7.3.
Alternative Names	EF2; Elongation factor 2; EF-2
Gene Symbol	EEF2
Entrez Gene	1938(Human)
SwissProt	P13639(Human)

\*AREX continuously optimizes our products. Webpage content may not reflect the latest updates. For inquiries, please contact [info@arexbio.com](mailto:info@arexbio.com) or your local distributor.

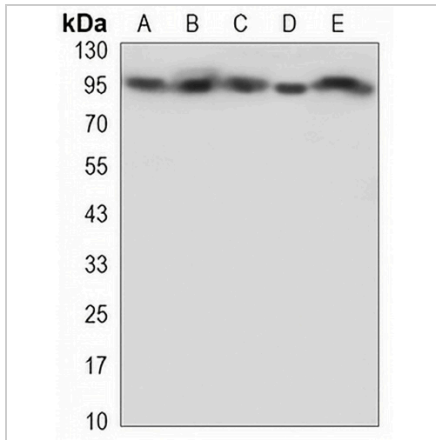
\*Clone Number, Reactivity, Source/Host and Clonality can be found in the product name and Key Features section above.

**DATASHEET**

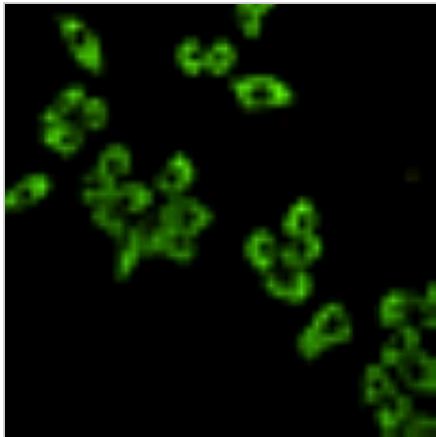
**EEF2 Mouse Monoclonal Antibody(C3321)**

CAT. NO. AMA02933

**DATA**



Western blot analysis of EEF2 expression in HL60 (A), Jurkat (B), SHSY5Y (C), U2OS (D), HeLa (E) whole cell lysates. (Predicted band size: 95 kD; Observed band size: 95 kD)



Immunofluorescent analysis of EEF2 staining in HeLa cells. Formalin-fixed cells were permeabilized with 0.1% Triton X-100 in TBS for 5-10 minutes and blocked with 3% BSA-PBS for 30 minutes at room temperature. Cells were probed with the primary antibody in 3% BSA-PBS and incubated overnight at 4 °C in a humidified chamber. Cells were washed with PBST and incubated with a AREX® Fluor 488 -conjugated secondary antibody (green) in PBS at room temperature in the dark.

**STORAGE**

Store at 4°C short term. For long term storage, store at -20°C, avoiding freeze/thaw cycles.

**NOTE**

For Research Use Only. Not for diagnostic, therapeutics, prophylactic or in vivo use.