

DATASHEET

Syntenin Mouse Monoclonal Antibody(C3325)

CAT. NO. AMA02937

KEY FEATURES

Target	Syntenin	Source / Host	Mouse
Reactivity	Human	Clonality	Monoclonal
Applications	WB	Conjugation	Unconjugated
Form / Buffer	Liquid in PBS containing 50% glycerol, 0.5% BSA and 0.02% sodium azide, pH 7.3.	Storage	at-20°C

BACKGROUND

Multifunctional adapter protein involved in diverse array of functions including trafficking of transmembrane proteins, neuro and immunomodulation, exosome biogenesis, and tumorigenesis . Positively regulates TGFB1-mediated SMAD2/3 activation and TGFB1-induced epithelial-to-mesenchymal transition (EMT) and cell migration in various cell types. May increase TGFB1 signaling by enhancing cell-surface expression of TGFR1 by preventing the interaction between TGFR1 and CAV1 and subsequent CAV1-dependent internalization and degradation of TGFR1 . In concert with SDC1/4 and PDCD6IP, regulates exosome biogenesis . Regulates migration, growth, proliferation, and cell cycle progression in a variety of cancer types .

APPLICATION

To ensure optimal assay performance, AREX recommends conducting reagent titration tailored to each testing system for optimal detection results.

WB	1:500 - 1:1000
----	----------------

*Results are sample-specific. Please refer to your local assay conditions and test parameters for reference.

PRODUCT OVERVIEW

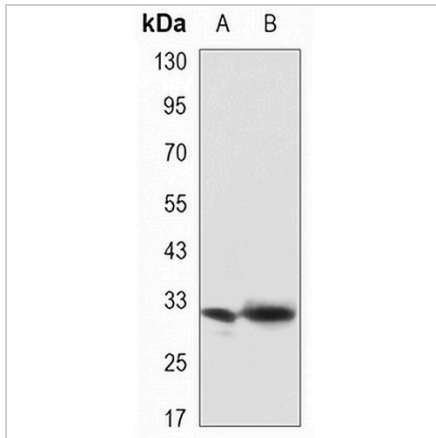
Description	Mouse monoclonal antibody to Syntenin
Specificity	Recognizes endogenous levels of Syntenin protein.
Antibody Type	Primary antibody
Immunogen	Purified recombinant human Syntenin protein fragments expressed in E.coli.
Purification	The antibody was purified by immunogen affinity chromatography.
Molecular Weight	Predicted: 32 kD; Observed: 32 kD
Form/Buffer	Liquid in PBS containing 50% glycerol, 0.5% BSA and 0.02% sodium azide, pH 7.3.
Alternative Names	MDA9; SYCL; Syntenin-1; Melanoma differentiation-associated protein 9; MDA-9; Pro-TGF-alpha cytoplasmic domain-interacting protein 18; TACIP18; Scaffold protein Pbp1; Syndecan-binding protein 1
Gene Symbol	SDCBP
Entrez Gene	6386(Human)
SwissProt	O00560(Human)

*AREX continuously optimizes our products. Webpage content may not reflect the latest updates. For inquiries, please contact info@arexbio.com or your local distributor.

*Clone Number, Reactivity, Source/Host and Clonality can be found in the product name and Key Features section above.

DATASHEET**Syntenin Mouse Monoclonal Antibody(C3325)**

CAT. NO. AMA02937

DATA

Western blot analysis of Syntenin expression in HeLa (A), HeLa (B) whole cell lysates.
(Predicted band size: 32 kD; Observed band size: 32 kD)

STORAGE

Store at 4°C short term. For long term storage, store at -20°C, avoiding freeze/thaw cycles.

NOTE

For Research Use Only. Not for diagnostic, therapeutics, prophylactic or in vivo use.