

DATASHEET

Beta-tubulin Mouse Monoclonal Antibody(C3328)

CAT. NO. AMA02940

KEY FEATURES

Target	Beta-tubulin	Source / Host	Mouse
Reactivity	Human, Mouse, Rat, Monkey, Goat, Hamster, Algae	Clonality	Monoclonal
Applications	WB, IF/ICC	Conjugation	Unconjugated
Form / Buffer	Liquid in PBS containing 50% glycerol, 0.5% BSA and 0.02% sodium azide, pH 7.3.	Storage	at-20°C

BACKGROUND

Tubulin is the major constituent of microtubules, a cylinder consisting of laterally associated linear protofilaments composed of alpha- and beta-tubulin heterodimers. Microtubules grow by the addition of GTP-tubulin dimers to the microtubule end, where a stabilizing cap forms. Below the cap, tubulin dimers are in GDP-bound state, owing to GTPase activity of alpha-tubulin.

APPLICATION

To ensure optimal assay performance, AREX recommends conducting reagent titration tailored to each testing system for optimal detection results.

WB	1:500 - 1:1000
IF/ICC	1:50 - 1:100

*Results are sample-specific. Please refer to your local assay conditions and test parameters for reference.

PRODUCT OVERVIEW

Description	Mouse monoclonal antibody to Beta-tubulin
Specificity	Recognizes endogenous levels of Beta-tubulin protein.
Antibody Type	Primary antibody
Immunogen	Purified recombinant human Tubulin beta protein fragments expressed in E.coli.
Purification	The antibody was purified by immunogen affinity chromatography.
Molecular Weight	Predicted: 50 kD; Observed: 55 kD
Form/Buffer	Liquid in PBS containing 50% glycerol, 0.5% BSA and 0.02% sodium azide, pH 7.3.
Alternative Names	TUBB5; Tubulin beta chain; Tubulin beta-5 chain
Gene Symbol	TUBB
Entrez Gene	203068(Human); 22154(Mouse); 29214(Rat)
SwissProt	P07437(Human); P99024(Mouse); P69897(Rat)

*AREX continuously optimizes our products. Webpage content may not reflect the latest updates. For inquiries, please contact info@arexbio.com or your local distributor.

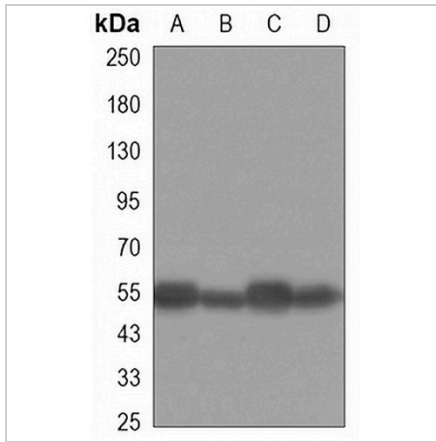
*Clone Number, Reactivity, Source/Host and Clonality can be found in the product name and Key Features section above.

DATASHEET

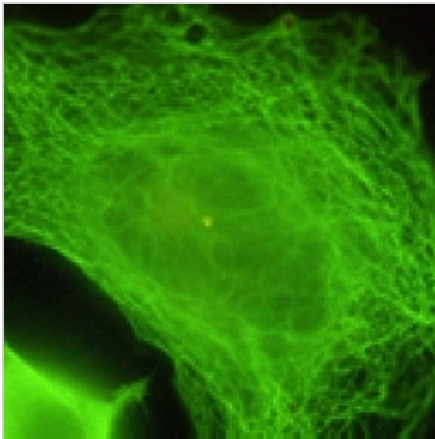
Beta-tubulin Mouse Monoclonal Antibody(C3328)

CAT. NO. AMA02940

DATA



Western blot analysis of Beta-tubulin expression in COS7 (A), LNCap (B), MCF7 (C), C2C12 (D) whole cell lysates. (Predicted band size: 50 kD; Observed band size: 55 kD)



Immunofluorescent analysis of Beta-tubulin staining in HeLa cells. Formalin-fixed cells were permeabilized with 0.1% Triton X-100 in TBS for 5-10 minutes and blocked with 3% BSA-PBS for 30 minutes at room temperature. Cells were probed with the primary antibody in 3% BSA-PBS and incubated overnight at 4 °C in a humidified chamber. Cells were washed with PBST and incubated with a AREX® Fluor 488 -conjugated secondary antibody (green) in PBS at room temperature in the dark.

STORAGE

Store at 4°C short term. For long term storage, store at -20°C, avoiding freeze/thaw cycles.

NOTE

For Research Use Only. Not for diagnostic, therapeutics, prophylactic or in vivo use.