

**DATASHEET**

**CKMT1A Mouse Monoclonal Antibody(C3332)**

CAT. NO. AMA02944

**KEY FEATURES**

Target	CKMT1A	Source / Host	Mouse
Reactivity	Human, Mouse	Clonality	Monoclonal
Applications	WB	Conjugation	Unconjugated
Form / Buffer	Liquid in PBS containing 50% glycerol, 0.5% BSA and 0.02% sodium azide, pH 7.3.	Storage	at-20°C

**BACKGROUND**

Reversibly catalyzes the transfer of phosphate between ATP and various phosphogens (e.g. creatine phosphate). Creatine kinase isoenzymes play a central role in energy transduction in tissues with large, fluctuating energy demands, such as skeletal muscle, heart, brain and spermatozoa.

**APPLICATION**

To ensure optimal assay performance, AREX recommends conducting reagent titration tailored to each testing system for optimal detection results.

WB	1:500 - 1:1000
----	----------------

\*Results are sample-specific. Please refer to your local assay conditions and test parameters for reference.

**PRODUCT OVERVIEW**

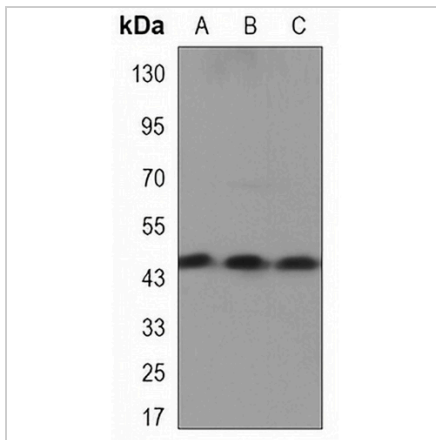
Description	Mouse monoclonal antibody to CKMT1A
Specificity	Recognizes endogenous levels of CKMT1A protein.
Antibody Type	Primary antibody
Immunogen	Purified recombinant human CKMT1 protein fragments expressed in E.coli.
Purification	The antibody was purified by immunogen affinity chromatography.
Molecular Weight	Predicted: 47 kD; Observed: 47 kD
Form/Buffer	Liquid in PBS containing 50% glycerol, 0.5% BSA and 0.02% sodium azide, pH 7.3.
Alternative Names	CKMT; CKMT; Creatine kinase U-type, mitochondrial; Acidic-type mitochondrial creatine kinase; Mia-CK; Ubiquitous mitochondrial creatine kinase; U-MtCK
Gene Symbol	CKMT1A
Entrez Gene	1159(Human); 12716(Mouse)
SwissProt	P12532(Human); P30275(Mouse)

\*AREX continuously optimizes our products. Webpage content may not reflect the latest updates. For inquiries, please contact [info@arexbio.com](mailto:info@arexbio.com) or your local distributor.

\*Clone Number, Reactivity, Source/Host and Clonality can be found in the product name and Key Features section above.

**DATASHEET****CKMT1A Mouse Monoclonal Antibody(C3332)**

CAT. NO. AMA02944

**DATA**

Western blot analysis of CKMT1A expression in mouse colon (A), 293T (B), A431 (C) whole cell lysates. (Predicted band size: 47 kD; Observed band size: 47 kD)

**STORAGE**

Store at 4°C short term. For long term storage, store at -20°C, avoiding freeze/thaw cycles.

**NOTE**

For Research Use Only. Not for diagnostic, therapeutics, prophylactic or in vivo use.