

## DATASHEET

# CALU Mouse Monoclonal Antibody(C3337)

CAT. NO. AMA02949

### KEY FEATURES

Target	CALU	Source / Host	Mouse
Reactivity	Human, Mouse	Clonality	Monoclonal
Applications	WB	Conjugation	Unconjugated
Form / Buffer	Liquid in PBS containing 50% glycerol, 0.5% BSA and 0.02% sodium azide, pH 7.3.	Storage	at-20°C

### BACKGROUND

Involved in regulation of vitamin K-dependent carboxylation of multiple N-terminal glutamate residues. Seems to inhibit gamma-carboxylase GGCX. Binds 7 calcium ions with a low affinity .

### APPLICATION

To ensure optimal assay performance, AREX recommends conducting reagent titration tailored to each testing system for optimal detection results.

WB	1:500 - 1:1000
----	----------------

\*Results are sample-specific. Please refer to your local assay conditions and test parameters for reference.

### PRODUCT OVERVIEW

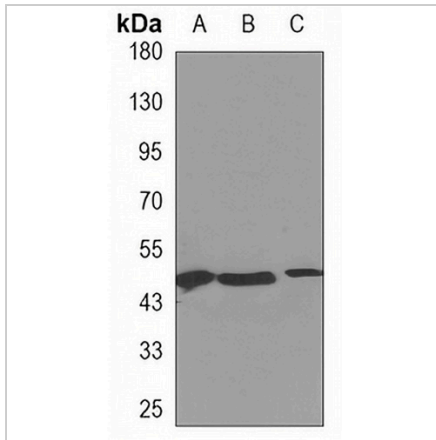
Description	Mouse monoclonal antibody to CALU
Specificity	Recognizes endogenous levels of CALU protein.
Antibody Type	Primary antibody
Immunogen	Purified recombinant human Calumenin protein fragments expressed in E.coli.
Purification	The antibody was purified by immunogen affinity chromatography.
Molecular Weight	Predicted: 37 kD; Observed: 45 kD
Form/Buffer	Liquid in PBS containing 50% glycerol, 0.5% BSA and 0.02% sodium azide, pH 7.3.
Alternative Names	Calumenin; Crocalbin; IEF SSP 9302
Gene Symbol	CALU
Entrez Gene	813(Human); 12321(Mouse)
SwissProt	O43852(Human); O35887(Mouse)

\*AREX continuously optimizes our products. Webpage content may not reflect the latest updates. For inquiries, please contact [info@arexbio.com](mailto:info@arexbio.com) or your local distributor.

\*Clone Number, Reactivity, Source/Host and Clonality can be found in the product name and Key Features section above.

**DATASHEET****CALU Mouse Monoclonal Antibody(C3337)**

CAT. NO. AMA02949

**DATA**

Western blot analysis of CALU expression in SW480 (A), mouse intestine (B), A431 (C) whole cell lysates. (Predicted band size: 37 kD; Observed band size: 45 kD)

**STORAGE**

Store at 4°C short term. For long term storage, store at -20°C, avoiding freeze/thaw cycles.

**NOTE**

For Research Use Only. Not for diagnostic, therapeutics, prophylactic or in vivo use.