

DATASHEET

CKMT2 Mouse Monoclonal Antibody(C3342)

CAT. NO. AMA02954

KEY FEATURES

Target	CKMT2	Source / Host	Mouse
Reactivity	Rat	Clonality	Monoclonal
Applications	WB	Conjugation	Unconjugated
Form / Buffer	Liquid in PBS containing 50% glycerol, 0.5% BSA and 0.02% sodium azide, pH 7.3.		Storage at-20°C

BACKGROUND

Mitochondrial creatine kinase (MtCK) is responsible for the transfer of high energy phosphate from mitochondria to the cytosolic carrier, creatine. It belongs to the creatine kinase isoenzyme family. It exists as two isoenzymes, sarcomeric MtCK and ubiquitous MtCK, encoded by separate genes. Mitochondrial creatine kinase occurs in two different oligomeric forms: dimers and octamers, in contrast to the exclusively dimeric cytosolic creatine kinase isoenzymes. Sarcomeric mitochondrial creatine kinase has 80% homology with the coding exons of ubiquitous mitochondrial creatine kinase.

APPLICATION

To ensure optimal assay performance, AREX recommends conducting reagent titration tailored to each testing system for optimal detection results.

WB	1:500 - 1:1000
----	----------------

*Results are sample-specific. Please refer to your local assay conditions and test parameters for reference.

PRODUCT OVERVIEW

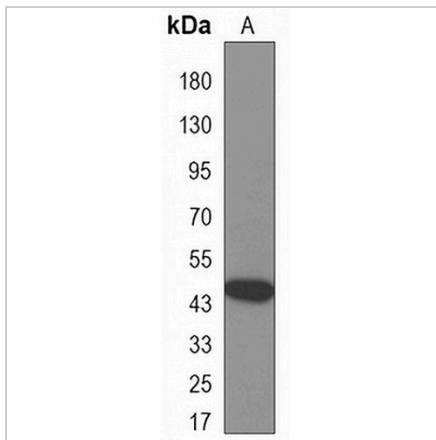
Description	Mouse monoclonal antibody to CKMT2
Specificity	Recognizes endogenous levels of CKMT2 protein.
Antibody Type	Primary antibody
Immunogen	Purified recombinant human CKMT2 protein fragments expressed in E.coli.
Purification	The antibody was purified by immunogen affinity chromatography.
Molecular Weight	Predicted: 48 kD; Observed: 48 kD
Form/Buffer	Liquid in PBS containing 50% glycerol, 0.5% BSA and 0.02% sodium azide, pH 7.3.
Alternative Names	Creatine kinase S-type mitochondrial; Basic-type mitochondrial creatine kinase; Mib-CK; Sarcomeric mitochondrial creatine kinase; S-MtCK
Gene Symbol	CKMT2
Entrez Gene	688698(Rat)
SwissProt	P09605(Rat)

*AREX continuously optimizes our products. Webpage content may not reflect the latest updates. For inquiries, please contact info@arexbio.com or your local distributor.

*Clone Number, Reactivity, Source/Host and Clonality can be found in the product name and Key Features section above.

DATASHEET**CKMT2 Mouse Monoclonal Antibody(C3342)**

CAT. NO. AMA02954

DATA

Western blot analysis of CKMT2 expression in rat brain (A) whole cell lysates. (Predicted band size: 48 kD; Observed band size: 48 kD)

STORAGE

Store at 4°C short term. For long term storage, store at -20°C, avoiding freeze/thaw cycles.

NOTE

For Research Use Only. Not for diagnostic, therapeutics, prophylactic or in vivo use.