

DATASHEET

CBR1 Mouse Monoclonal Antibody(C3348)

CAT. NO. AMA02960

KEY FEATURES

Target	CBR1	Source / Host	Mouse
Reactivity	Human	Clonality	Monoclonal
Applications	WB, IF/ICC	Conjugation	Unconjugated
Form / Buffer	Liquid in PBS containing 50% glycerol, 0.5% BSA and 0.02% sodium azide, pH 7.3.	Storage	at-20°C

BACKGROUND

NADPH-dependent reductase with broad substrate specificity. Catalyzes the reduction of a wide variety of carbonyl compounds including quinones, prostaglandins, menadione, plus various xenobiotics. Catalyzes the reduction of the antitumor anthracyclines doxorubicin and daunorubicin to the cardiotoxic compounds doxorubicinol and daunorubicinol . Can convert prostaglandin E to prostaglandin F₂-alpha . Can bind glutathione, which explains its higher affinity for glutathione-conjugated substrates. Catalyzes the reduction of S-nitrosoglutathione .

APPLICATION

To ensure optimal assay performance, AREX recommends conducting reagent titration tailored to each testing system for optimal detection results.

WB	1:500 - 1:1000
IF/ICC	1:50 - 1:100

*Results are sample-specific. Please refer to your local assay conditions and test parameters for reference.

PRODUCT OVERVIEW

Description	Mouse monoclonal antibody to CBR1
Specificity	Recognizes endogenous levels of CBR1 protein.
Antibody Type	Primary antibody
Immunogen	Purified recombinant human CBR1 protein fragments expressed in E.coli
Purification	The antibody was purified by immunogen affinity chromatography.
Molecular Weight	Predicted: 30 kD; Observed: 30 kD
Form/Buffer	Liquid in PBS containing 50% glycerol, 0.5% BSA and 0.02% sodium azide, pH 7.3.
Alternative Names	CBR; CRN; Carbonyl reductase [NADPH] 1; 15-hydroxyprostaglandin dehydrogenase [NADP(+)]; NADPH-dependent carbonyl reductase 1; Prostaglandin 9-ketoreductase; Prostaglandin-E(2) 9-reductase
Gene Symbol	CBR1
Entrez Gene	873(Human)
SwissProt	P16152(Human)

*AREX continuously optimizes our products. Webpage content may not reflect the latest updates. For inquiries, please contact info@arexbio.com or your local distributor.

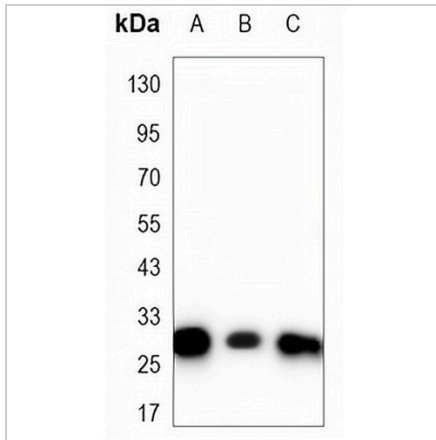
*Clone Number, Reactivity, Source/Host and Clonality can be found in the product name and Key Features section above.

DATASHEET

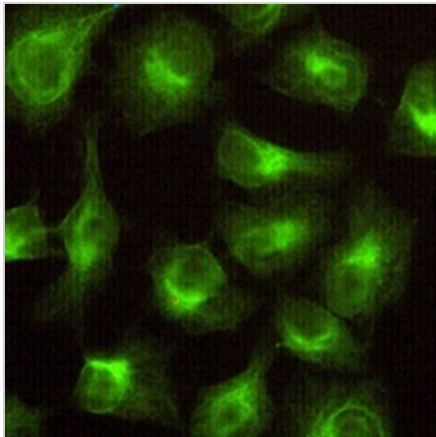
CBR1 Mouse Monoclonal Antibody(C3348)

CAT. NO. AMA02960

DATA



Western blot analysis of CBR1 expression in HeLa (A), A431 (B), MDAMB468 (C) whole cell lysates. (Predicted band size: 30 kD; Observed band size: 30 kD)



Immunofluorescent analysis of CBR1 staining in HeLa cells. Formalin-fixed cells were permeabilized with 0.1% Triton X-100 in TBS for 5-10 minutes and blocked with 3% BSA-PBS for 30 minutes at room temperature. Cells were probed with the primary antibody in 3% BSA-PBS and incubated overnight at 4 °C in a humidified chamber. Cells were washed with PBST and incubated with a AREX® Fluor 488 -conjugated secondary antibody (green) in PBS at room temperature in the dark.

STORAGE

Store at 4°C short term. For long term storage, store at -20°C, avoiding freeze/thaw cycles.

NOTE

For Research Use Only. Not for diagnostic, therapeutics, prophylactic or in vivo use.