

DATASHEET

Phostensin Mouse Monoclonal Antibody(C3360)

CAT. NO. AMA02972

KEY FEATURES

Target	Phostensin	Source / Host	Mouse
Reactivity	Human	Clonality	Monoclonal
Applications	WB	Conjugation	Unconjugated
Form / Buffer	Liquid in PBS containing 50% glycerol, 0.5% BSA and 0.02% sodium azide, pH 7.3.	Storage	at-20°C

BACKGROUND

May target protein phosphatase 1 to F-actin cytoskeleton.

APPLICATION

To ensure optimal assay performance, AREX recommends conducting reagent titration tailored to each testing system for optimal detection results.

WB	1:500 - 1:1000
----	----------------

*Results are sample-specific. Please refer to your local assay conditions and test parameters for reference.

PRODUCT OVERVIEW

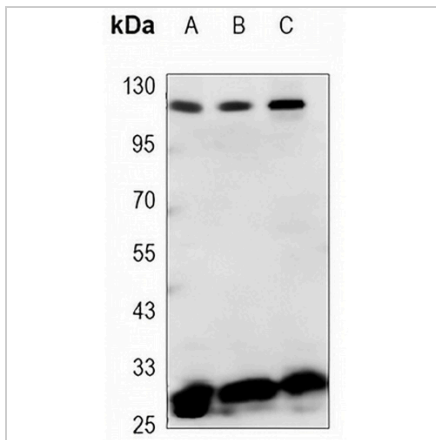
Description	Mouse monoclonal antibody to Phostensin
Specificity	Recognizes endogenous levels of Phostensin protein.
Antibody Type	Primary antibody
Immunogen	Purified recombinant human Phostensin protein fragments expressed in E.coli.
Purification	The antibody was purified by immunogen affinity chromatography.
Molecular Weight	Predicted: 68 kD; Observed: 110,26 kD
Form/Buffer	Liquid in PBS containing 50% glycerol, 0.5% BSA and 0.02% sodium azide, pH 7.3.
Alternative Names	HKMT1098; KIAA1949; Phostensin; Protein phosphatase 1 F-actin cytoskeleton-targeting subunit; Protein phosphatase 1 regulatory subunit 18
Gene Symbol	PPP1R18
Entrez Gene	170954(Human)
SwissProt	Q6NYC8(Human)

*AREX continuously optimizes our products. Webpage content may not reflect the latest updates. For inquiries, please contact info@arexbio.com or your local distributor.

*Clone Number, Reactivity, Source/Host and Clonality can be found in the product name and Key Features section above.

DATASHEET**Phostensin Mouse Monoclonal Antibody(C3360)**

CAT. NO. AMA02972

DATA

Western blot analysis of Phostensin expression in HeLa (A), Raji (B), Ramos (C) whole cell lysates. (Predicted band size: 68 kD; Observed band size: 110,26 kD)

STORAGE

Store at 4°C short term. For long term storage, store at -20°C, avoiding freeze/thaw cycles.

NOTE

For Research Use Only. Not for diagnostic, therapeutics, prophylactic or in vivo use.