

DATASHEET

XRCC1 Mouse Monoclonal Antibody(C3395)

CAT. NO. AMA03007

KEY FEATURES

Target	XRCC1	Source / Host	Mouse
Reactivity	Human	Clonality	Monoclonal
Applications	WB	Conjugation	Unconjugated
Form / Buffer	Liquid in PBS containing 50% glycerol, 0.5% BSA and 0.02% sodium azide, pH 7.3.		Storage at-20°C

BACKGROUND

Scaffold protein involved in DNA single-strand break repair by mediating the assembly of DNA break repair protein complexes . Negatively regulates ADP-ribosyltransferase activity of PARP1 during base-excision repair in order to prevent excessive PARP1 activity . Recognizes and binds poly-ADP-ribose chains: specifically binds auto-poly-ADP-ribosylated PARP1, limiting its activity .

APPLICATION

To ensure optimal assay performance, AREX recommends conducting reagent titration tailored to each testing system for optimal detection results.

WB	1:500 - 1:1000
----	----------------

*Results are sample-specific. Please refer to your local assay conditions and test parameters for reference.

PRODUCT OVERVIEW

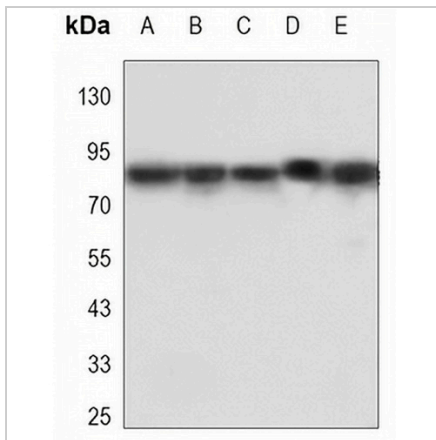
Description	Mouse monoclonal antibody to XRCC1
Specificity	Recognizes endogenous levels of XRCC1 protein.
Antibody Type	Primary antibody
Immunogen	Purified recombinant human XRCC1 protein fragments expressed in E.coli.
Purification	The antibody was purified by immunogen affinity chromatography.
Molecular Weight	Predicted: 69 kD; Observed: 82 kD
Form/Buffer	Liquid in PBS containing 50% glycerol, 0.5% BSA and 0.02% sodium azide, pH 7.3.
Alternative Names	DNA repair protein XRCC1; X-ray repair cross-complementing protein 1
Gene Symbol	XRCC1
Entrez Gene	7515(Human)
SwissProt	P18887(Human)

*AREX continuously optimizes our products. Webpage content may not reflect the latest updates. For inquiries, please contact info@arexbio.com or your local distributor.

*Clone Number, Reactivity, Source/Host and Clonality can be found in the product name and Key Features section above.

DATASHEET**XRCC1 Mouse Monoclonal Antibody(C3395)**

CAT. NO. AMA03007

DATA

Western blot analysis of XRCC1 expression in Raji (A), K562 (B), HeLa (C), Jurkat (D), THP1 (E) whole cell lysates. (Predicted band size: 69 kD; Observed band size: 82 kD)

STORAGE

Store at 4°C short term. For long term storage, store at -20°C, avoiding freeze/thaw cycles.

NOTE

For Research Use Only. Not for diagnostic, therapeutics, prophylactic or in vivo use.