

DATASHEET

RSK1 Mouse Monoclonal Antibody(C3400)

CAT. NO. AMA03012

KEY FEATURES

Target	RSK1	Source / Host	Mouse
Reactivity	Human, Mouse, Monkey	Clonality	Monoclonal
Applications	WB, IP	Conjugation	Unconjugated
Form / Buffer	Liquid in PBS containing 50% glycerol, 0.5% BSA and 0.02% sodium azide, pH 7.3.	Storage	at-20°C

BACKGROUND

Serine/threonine-protein kinase that acts downstream of ERK (MAPK1/ERK2 and MAPK3/ERK1) signaling and mediates mitogenic and stress-induced activation of the transcription factors CREB1, ETV1/ER81 and NR4A1/NUR77, regulates translation through RPS6 and EIF4B phosphorylation, and mediates cellular proliferation, survival, and differentiation by modulating mTOR signaling and repressing pro-apoptotic function of BAD and DAPK1 signaling and mediates mitogenic and stress-induced activation of the transcription factors CREB1, ETV1/ER81 and NR4A1/NUR77, regulates translation through RPS6 and EIF4B phosphorylation, and mediates cellular proliferation, survival, and differentiation by modulating mTOR signaling and repressing pro-apoptotic function of BAD and DAPK1 .

APPLICATION

To ensure optimal assay performance, AREX recommends conducting reagent titration tailored to each testing system for optimal detection results.

WB	1:500 - 1:1000
IP	1:10 - 1:50

*Results are sample-specific. Please refer to your local assay conditions and test parameters for reference.

PRODUCT OVERVIEW

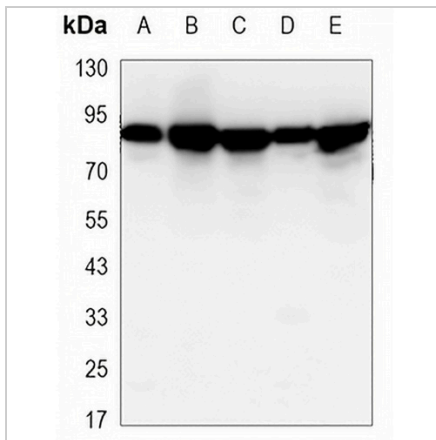
Description	Mouse monoclonal antibody to RSK1
Specificity	Recognizes endogenous levels of RSK1 protein.
Antibody Type	Primary antibody
Immunogen	Purified recombinant human p90RSK protein fragments expressed in E.coli.
Purification	The antibody was purified by immunogen affinity chromatography.
Molecular Weight	Predicted: 83 kD; Observed: 90 kD
Form/Buffer	Liquid in PBS containing 50% glycerol, 0.5% BSA and 0.02% sodium azide, pH 7.3.
Alternative Names	MAPKAPK1A; RSK1; Ribosomal protein S6 kinase alpha-1; S6K-alpha-1; 90 kDa ribosomal protein S6 kinase 1; p90-RSK 1; p90RSK1; p90S6K; MAP kinase-activated protein kinase 1a; MAPK-activated protein kinase 1a; MAPKAP kinase 1a; MAPKAPK-1a; Ribosomal S6 kinase 1; RSK-1
Gene Symbol	RPS6KA1
Entrez Gene	6195(Human); 20111(Mouse)
SwissProt	Q15418(Human); P18653(Mouse)

*AREX continuously optimizes our products. Webpage content may not reflect the latest updates. For inquiries, please contact info@arexbio.com or your local distributor.

*Clone Number, Reactivity, Source/Host and Clonality can be found in the product name and Key Features section above.

DATASHEET**RSK1 Mouse Monoclonal Antibody(C3400)**

CAT. NO. AMA03012

DATA

Western blot analysis of RSK1 expression in COS7 (A), NIH3T3 (B), Jurkat (C), HeLa (D), A549 (E) whole cell lysates. (Predicted band size: 83 kD; Observed band size: 90 kD)

STORAGE

Store at 4°C short term. For long term storage, store at -20°C, avoiding freeze/thaw cycles.

NOTE

For Research Use Only. Not for diagnostic, therapeutics, prophylactic or in vivo use.