

DATASHEET

CREB Mouse Monoclonal Antibody(C3403)

CAT. NO. AMA03015

KEY FEATURES

Target	CREB	Source / Host	Mouse
Reactivity	Human, Rat	Clonality	Monoclonal
Applications	WB	Conjugation	Unconjugated
Form / Buffer	Liquid in PBS containing 50% glycerol, 0.5% BSA and 0.02% sodium azide, pH 7.3.	Storage	at-20°C

BACKGROUND

Phosphorylation-dependent transcription factor that stimulates transcription upon binding to the DNA cAMP response element (CRE), a sequence present in many viral and cellular promoters . Transcription activation is enhanced by the TORC coactivators which act independently of Ser-119 phosphorylation , a sequence present in many viral and cellular promoters . Transcription activation is enhanced by the TORC coactivators which act independently of Ser-119 phosphorylation . Involved in different cellular processes including the synchronization of circadian rhythmicity and the differentiation of adipose cells . Regulates the expression of apoptotic and inflammatory response factors in cardiomyocytes in response to ERFE-mediated activation of AKT signaling .

APPLICATION

To ensure optimal assay performance, AREX recommends conducting reagent titration tailored to each testing system for optimal detection results.

WB	1:500 - 1:1000
----	----------------

*Results are sample-specific. Please refer to your local assay conditions and test parameters for reference.

PRODUCT OVERVIEW

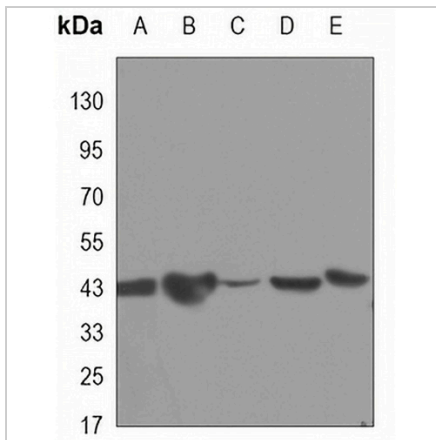
Description	Mouse monoclonal antibody to CREB
Specificity	Recognizes endogenous levels of CREB protein.
Antibody Type	Primary antibody
Immunogen	Purified recombinant human CREB protein fragments expressed in E.coli.
Purification	The antibody was purified by immunogen affinity chromatography.
Molecular Weight	Predicted: 35 kD; Observed: 43 kD
Form/Buffer	Liquid in PBS containing 50% glycerol, 0.5% BSA and 0.02% sodium azide, pH 7.3.
Alternative Names	Cyclic AMP-responsive element-binding protein 1; CREB-1; cAMP-responsive element-binding protein 1
Gene Symbol	CREB1
Entrez Gene	1385(Human); 81646(Rat)
SwissProt	P16220(Human); P15337(Rat)

*AREX continuously optimizes our products. Webpage content may not reflect the latest updates. For inquiries, please contact info@arexbio.com or your local distributor.

*Clone Number, Reactivity, Source/Host and Clonality can be found in the product name and Key Features section above.

DATASHEET**CREB Mouse Monoclonal Antibody(C3403)**

CAT. NO. AMA03015

DATA

Western blot analysis of CREB expression in Jurkat (A), A549 (B), MCF7 (C), C6 (D), HeLa (E) whole cell lysates. (Predicted band size: 35 kD; Observed band size: 43 kD)

STORAGE

Store at 4°C short term. For long term storage, store at -20°C, avoiding freeze/thaw cycles.

NOTE

For Research Use Only. Not for diagnostic, therapeutics, prophylactic or in vivo use.