

DATASHEET

GRAP2 Mouse Monoclonal Antibody(C3407)

CAT. NO. AMA03019

KEY FEATURES

Target	GRAP2	Source / Host	Mouse
Reactivity	Human	Clonality	Monoclonal
Applications	WB	Conjugation	Unconjugated
Form / Buffer	Liquid in PBS containing 50% glycerol, 0.5% BSA and 0.02% sodium azide, pH 7.3.	Storage	at-20°C

BACKGROUND

Interacts with SLP-76 to regulate NF-AT activation. Binds to tyrosine-phosphorylated shc.

APPLICATION

To ensure optimal assay performance, AREX recommends conducting reagent titration tailored to each testing system for optimal detection results.

WB	1:500 - 1:1000
----	----------------

*Results are sample-specific. Please refer to your local assay conditions and test parameters for reference.

PRODUCT OVERVIEW

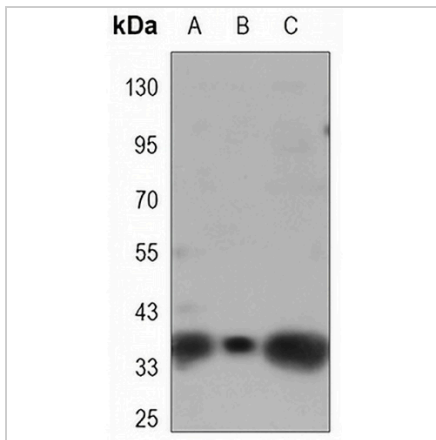
Description	Mouse monoclonal antibody to GRAP2
Specificity	Recognizes endogenous levels of GRAP2 protein.
Antibody Type	Primary antibody
Immunogen	Recombinant protein of human GRAP2.
Purification	The antibody was purified by immunogen affinity chromatography.
Molecular Weight	Predicted: 38 kD; Observed: 38 kD
Form/Buffer	Liquid in PBS containing 50% glycerol, 0.5% BSA and 0.02% sodium azide, pH 7.3.
Alternative Names	GADS; GRB2L; GRID; GRB2-related adapter protein 2; Adapter protein GRID; GRB-2-like protein; GRB2L; GRBLG; GRBX; Grf40 adapter protein; Grf-40; Growth factor receptor-binding protein; Hematopoietic cell-associated adapter protein GrpL; P38; Protein GADS; SH3-SH2-SH3 adapter Mona
Gene Symbol	GRAP2
Entrez Gene	9402(Human)
SwissProt	O75791(Human)

*AREX continuously optimizes our products. Webpage content may not reflect the latest updates. For inquiries, please contact info@arexbio.com or your local distributor.

*Clone Number, Reactivity, Source/Host and Clonality can be found in the product name and Key Features section above.

DATASHEET**GRAP2 Mouse Monoclonal Antibody(C3407)**

CAT. NO. AMA03019

DATA

Western blot analysis of GRAP2 expression in CEM (A), Molt4 (B), Jurkat (C) whole cell lysates. (Predicted band size: 38 kD; Observed band size: 38 kD)

STORAGE

Store at 4°C short term. For long term storage, store at -20°C, avoiding freeze/thaw cycles.

NOTE

For Research Use Only. Not for diagnostic, therapeutics, prophylactic or in vivo use.