

DATASHEET

S100-A10 Mouse Monoclonal Antibody(C3409)

CAT. NO. AMA03021

KEY FEATURES

Target	S100-A10	Source / Host	Mouse
Reactivity	Human, Mouse, Rat	Clonality	Monoclonal
Applications	WB, IF/ICC, IP	Conjugation	Unconjugated
Form / Buffer	Liquid in PBS containing 50% glycerol, 0.5% BSA and 0.02% sodium azide, pH 7.3.	Storage	at-20°C

BACKGROUND

Because S100A10 induces the dimerization of ANXA2/p36, it may function as a regulator of protein phosphorylation in that the ANXA2 monomer is the preferred target (in vitro) of tyrosine-specific kinase.

APPLICATION

To ensure optimal assay performance, AREX recommends conducting reagent titration tailored to each testing system for optimal detection results.

WB	1:500 - 1:1000
IF/ICC	1:50 - 1:100
IP	1:10 - 1:50

*Results are sample-specific. Please refer to your local assay conditions and test parameters for reference.

PRODUCT OVERVIEW

Description	Mouse monoclonal antibody to S100-A10
Specificity	Recognizes endogenous levels of S100-A10 protein.
Antibody Type	Primary antibody
Immunogen	Purified recombinant mouse S100A10 protein fragments expressed in E.coli.
Purification	The antibody was purified by immunogen affinity chromatography.
Molecular Weight	Predicted: 11 kD; Observed: 11 kD
Form/Buffer	Liquid in PBS containing 50% glycerol, 0.5% BSA and 0.02% sodium azide, pH 7.3.
Alternative Names	ANX2LG; CAL1L; CLP11; Protein S100-A10; Calpactin I light chain; Calpactin-1 light chain; Cellular ligand of annexin II; S100 calcium-binding protein A10; p10 protein; p11
Gene Symbol	S100A10
Entrez Gene	20194(Human); 20194(Mouse); 81778(Rat)
SwissProt	P60903(Human); P08207(Mouse); P05943(Rat)

*AREX continuously optimizes our products. Webpage content may not reflect the latest updates. For inquiries, please contact info@arexbio.com or your local distributor.

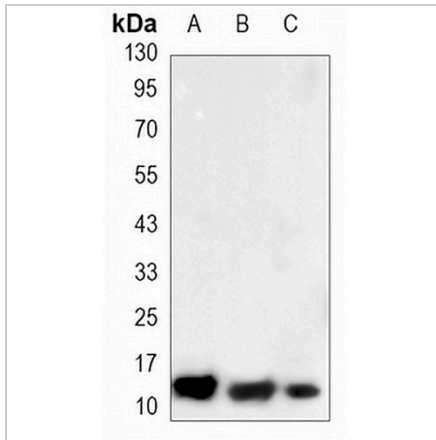
*Clone Number, Reactivity, Source/Host and Clonality can be found in the product name and Key Features section above.

DATASHEET

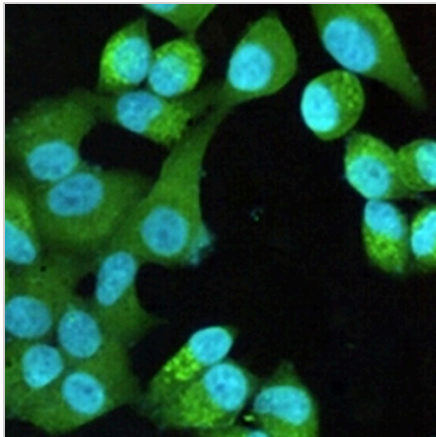
S100-A10 Mouse Monoclonal Antibody(C3409)

CAT. NO. AMA03021

DATA



Western blot analysis of S100-A10 expression in C6 (A), NIH3T3 (B), HeLa (C) whole cell lysates. (Predicted band size: 11 kD; Observed band size: 11 kD)



Immunofluorescent analysis of S100-A10 staining in HeLa cells. Formalin-fixed cells were permeabilized with 0.1% Triton X-100 in TBS for 5-10 minutes and blocked with 3% BSA-PBS for 30 minutes at room temperature. Cells were probed with the primary antibody in 3% BSA-PBS and incubated overnight at 4 °C in a humidified chamber. Cells were washed with PBST and incubated with a AREX® Fluor 488 -conjugated secondary antibody (green) in PBS at room temperature in the dark. DAPI was used to stain the cell nuclei (blue).

STORAGE

Store at 4°C short term. For long term storage, store at -20°C, avoiding freeze/thaw cycles.

NOTE

For Research Use Only. Not for diagnostic, therapeutics, prophylactic or in vivo use.