

## DATASHEET

# RPS6 Mouse Monoclonal Antibody(C3414)

CAT. NO. AMA03026

### KEY FEATURES

Target	RPS6	Source / Host	Mouse
Reactivity	Human, Mouse, Rat, Monkey	Clonality	Monoclonal
Applications	WB, IF/ICC, IP	Conjugation	Unconjugated
Form / Buffer	Liquid in PBS containing 50% glycerol, 0.5% BSA and 0.02% sodium azide, pH 7.3.	Storage	at-20°C

### BACKGROUND

Component of the 40S small ribosomal subunit . Plays an important role in controlling cell growth and proliferation through the selective translation of particular classes of mRNA . Part of the small subunit (SSU) processome, first precursor of the small eukaryotic ribosomal subunit. During the assembly of the SSU processome in the nucleolus, many ribosome biogenesis factors, an RNA chaperone and ribosomal proteins associate with the nascent pre-rRNA and work in concert to generate RNA folding, modifications, rearrangements and cleavage as well as targeted degradation of pre-ribosomal RNA by the RNA exosome .

### APPLICATION

To ensure optimal assay performance, AREX recommends conducting reagent titration tailored to each testing system for optimal detection results.

WB	1:500 - 1:1000
IF/ICC	1:50 - 1:100
IP	1:10 - 1:50

\*Results are sample-specific. Please refer to your local assay conditions and test parameters for reference.

### PRODUCT OVERVIEW

Description	Mouse monoclonal antibody to RPS6
Specificity	Recognizes endogenous levels of RPS6 protein.
Antibody Type	Primary antibody
Immunogen	Synthetic peptide derived from human S6 Ribosomal Protein.
Purification	The antibody was purified by immunogen affinity chromatography.
Molecular Weight	Predicted: 29 kD; Observed: 32 kD
Form/Buffer	Liquid in PBS containing 50% glycerol, 0.5% BSA and 0.02% sodium azide, pH 7.3.
Alternative Names	40S ribosomal protein S6; Phosphoprotein NP33
Gene Symbol	RPS6
Entrez Gene	6194(Human); 20104(Mouse); 100911372; 29304(Rat)
SwissProt	P62753(Human); P62754(Mouse); P62755(Rat)

\*AREX continuously optimizes our products. Webpage content may not reflect the latest updates. For inquiries, please contact [info@arexbio.com](mailto:info@arexbio.com) or your local distributor.

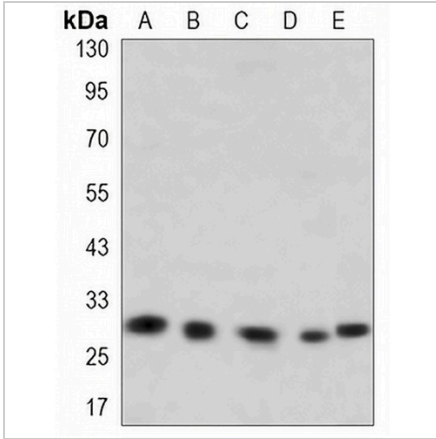
\*Clone Number, Reactivity, Source/Host and Clonality can be found in the product name and Key Features section above.

**DATASHEET**

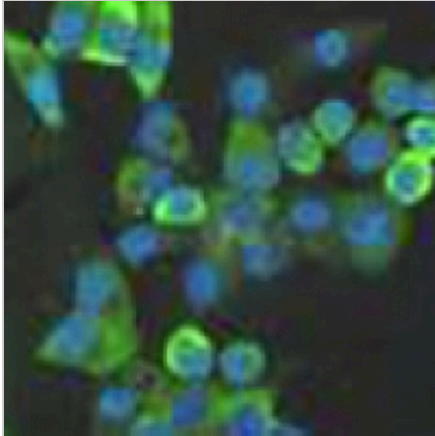
**RPS6 Mouse Monoclonal Antibody(C3414)**

CAT. NO. AMA03026

**DATA**



Western blot analysis of RPS6 expression in Ramos (A), Jurkat (B), C6 (C), NIH3T3 (D), HeLa (E) whole cell lysates. (Predicted band size: 29 kD; Observed band size: 32 kD)



Immunofluorescent analysis of RPS6 staining in HeLa cells. Formalin-fixed cells were permeabilized with 0.1% Triton X-100 in TBS for 5-10 minutes and blocked with 3% BSA-PBS for 30 minutes at room temperature. Cells were probed with the primary antibody in 3% BSA-PBS and incubated overnight at 4 °C in a humidified chamber. Cells were washed with PBST and incubated with a AREX® Fluor 488 -conjugated secondary antibody (green) in PBS at room temperature in the dark. DAPI was used to stain the cell nuclei (blue).

**STORAGE**

Store at 4°C short term. For long term storage, store at -20°C, avoiding freeze/thaw cycles.

**NOTE**

For Research Use Only. Not for diagnostic, therapeutics, prophylactic or in vivo use.