

**DATASHEET**

**nm23-H1 Mouse Monoclonal Antibody(C3423)**

CAT. NO. AMA03035

**KEY FEATURES**

Target	nm23-H1	Source / Host	Mouse
Reactivity	Human, Mouse, Rat	Clonality	Monoclonal
Applications	WB	Conjugation	Unconjugated
Form / Buffer	Liquid in PBS containing 50% glycerol, 0.5% BSA and 0.02% sodium azide, pH 7.3.	Storage	at-20°C

**BACKGROUND**

Catalyzes the transfer of a gamma-phosphoryl group from a nucleoside triphosphate, mainly ATP, to a nucleoside diphosphate via a ping-pong mechanism involving a phosphohistidine intermediate, therefore contributing to the nucleoside triphosphate homeostasis . Also phosphorylates geranyl pyrophosphate (GPP) and farnesyl pyrophosphate (FPP), linking it to isoprenoid metabolism . Additionally, functions as a non-specific serine/threonine kinase and histidine protein kinase, transferring phosphoryl groups from its active site to target proteins . May function as a Mg(2+)-dependent single-stranded DNA endonuclease as part of the SET complex, cooperating with the 3'-5' exonuclease TREX1 to mediate apoptotic DNA fragmentation in cytotoxic T lymphocytes .

**APPLICATION**

To ensure optimal assay performance, AREX recommends conducting reagent titration tailored to each testing system for optimal detection results.

WB	1:500 - 1:1000
----	----------------

\*Results are sample-specific. Please refer to your local assay conditions and test parameters for reference.

**PRODUCT OVERVIEW**

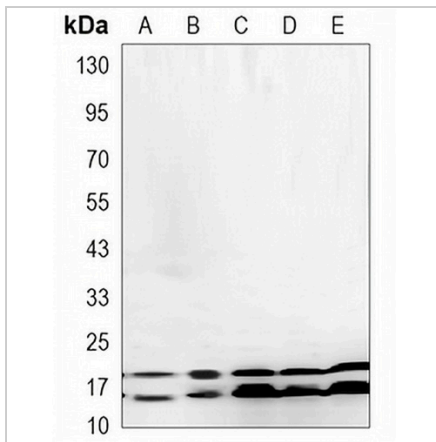
Description	Mouse monoclonal antibody to nm23-H1
Specificity	Recognizes endogenous levels of nm23-H1 protein.
Antibody Type	Primary antibody
Immunogen	Synthetic peptide corresponding to human NME1/NDKA protein
Purification	The antibody was purified by immunogen affinity chromatography.
Molecular Weight	Predicted: 17 kD; Observed: 16,18 kD
Form/Buffer	Liquid in PBS containing 50% glycerol, 0.5% BSA and 0.02% sodium azide, pH 7.3.
Alternative Names	NDPKA; NM23; Nucleoside diphosphate kinase A; NDK A; NDP kinase A; Granzyme A-activated DNase; GAAD; Metastasis inhibition factor nm23; NM23-H1; Tumor metastatic process-associated protein
Gene Symbol	NME1
Entrez Gene	4830(Human); 18102(Mouse); 191575(Rat)
SwissProt	P15531(Human); P15532(Mouse); Q05982(Rat)

\*AREX continuously optimizes our products. Webpage content may not reflect the latest updates. For inquiries, please contact [info@arexbio.com](mailto:info@arexbio.com) or your local distributor.

\*Clone Number, Reactivity, Source/Host and Clonality can be found in the product name and Key Features section above.

**DATASHEET****nm23-H1 Mouse Monoclonal Antibody(C3423)**

CAT. NO. AMA03035

**DATA**

Western blot analysis of nm23-H1 expression in A549 (A), MCF7 (B), NIH3T3 (C), C6 (D), HeLa (E) whole cell lysates. (Predicted band size: 17 kD; Observed band size: 16,18 kD)

**STORAGE**

Store at 4°C short term. For long term storage, store at -20°C, avoiding freeze/thaw cycles.

**NOTE**

For Research Use Only. Not for diagnostic, therapeutics, prophylactic or in vivo use.