

DATASHEET

EPHB1 Mouse Monoclonal Antibody(C3431)

CAT. NO. AMA03043

KEY FEATURES

| | | | |
|---------------|---|---------------|--------------|
| Target | EPHB1 | Source / Host | Mouse |
| Reactivity | Human | Clonality | Monoclonal |
| Applications | WB, IHC | Conjugation | Unconjugated |
| Form / Buffer | Liquid in PBS containing 50% glycerol, 0.5% BSA and 0.02% sodium azide, pH 7.3. | Storage | at-20°C |

BACKGROUND

Receptor tyrosine kinase which binds promiscuously transmembrane ephrin-B family ligands residing on adjacent cells, leading to contact-dependent bidirectional signaling into neighboring cells. The signaling pathway downstream of the receptor is referred to as forward signaling while the signaling pathway downstream of the ephrin ligand is referred to as reverse signaling. Cognate/functional ephrin ligands for this receptor include EFNB1, EFNB2 and EFNB3. During nervous system development, regulates retinal axon guidance redirecting ipsilaterally ventrotemporal retinal ganglion cells axons at the optic chiasm midline. This probably requires repulsive interaction with EFNB2.

APPLICATION

To ensure optimal assay performance, AREX recommends conducting reagent titration tailored to each testing system for optimal detection results.

| | |
|-----|----------------|
| WB | 1:500 - 1:1000 |
| IHC | 1:50 - 1:100 |

*Results are sample-specific. Please refer to your local assay conditions and test parameters for reference.

PRODUCT OVERVIEW

| | |
|-------------------|--|
| Description | Mouse monoclonal antibody to EPHB1 |
| Specificity | Recognizes endogenous levels of EPHB1 protein. |
| Antibody Type | Primary antibody |
| Immunogen | Purified recombinant fragment of EphB1 (aa19-133) expressed in E. Coli. |
| Purification | The antibody was purified by immunogen affinity chromatography. |
| Molecular Weight | Predicted: 110 kD; Observed: 110 kD |
| Form/Buffer | Liquid in PBS containing 50% glycerol, 0.5% BSA and 0.02% sodium azide, pH 7.3. |
| Alternative Names | ELK; EPHT2; HEK6; NET; Ephrin type-B receptor 1; ELK; EPH tyrosine kinase 2; EPH-like kinase 6; EK6; hEK6; Neuronally-expressed EPH-related tyrosine kinase; NET; Tyrosine-protein kinase receptor EPH-2 |
| Gene Symbol | EPHB1 |
| Entrez Gene | 2047(Human) |
| SwissProt | P54762(Human) |

*AREX continuously optimizes our products. Webpage content may not reflect the latest updates. For inquiries, please contact info@arexbio.com or your local distributor.

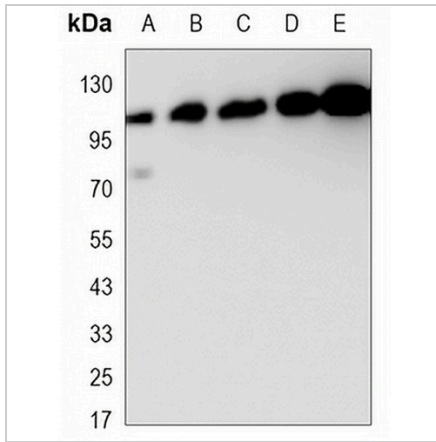
*Clone Number, Reactivity, Source/Host and Clonality can be found in the product name and Key Features section above.

DATASHEET

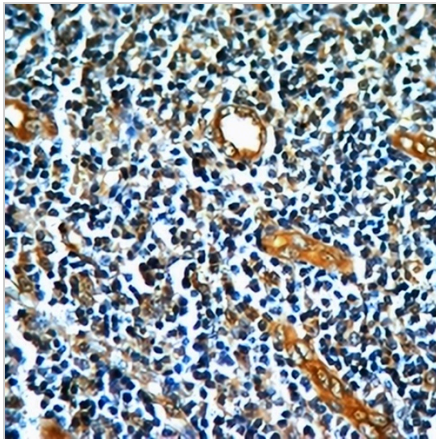
EPHB1 Mouse Monoclonal Antibody(C3431)

CAT. NO. AMA03043

DATA



Western blot analysis of EPHB1 expression in MDAMB468 (A), MDAMB453 (B), MCF7 (C), T47D (D), SKBR3 (E) whole cell lysates. (Predicted band size: 110 kD; Observed band size: 110 kD)



Immunohistochemical analysis of EPHB1 staining in human tonsil formalin fixed paraffin embedded tissue section. The section was pre-treated using heat mediated antigen retrieval with sodium citrate buffer (pH 6.0). The section was then incubated with the antibody at room temperature and detected using an HRP conjugated compact polymer system. DAB was used as the chromogen. The section was then counterstained with haematoxylin and mounted with DPX.

STORAGE

Store at 4°C short term. For long term storage, store at -20°C, avoiding freeze/thaw cycles.

NOTE

For Research Use Only. Not for diagnostic, therapeutics, prophylactic or in vivo use.