

DATASHEET

Beta-actin Mouse Monoclonal Antibody(C3446)

CAT. NO. AMA03058

KEY FEATURES

Target	Beta-actin	Source / Host	Mouse
Reactivity	Human, Mouse, Rat, Monkey, Chicken, Goat, Hamster, Pig, Rabbit, Zebrafish, Algae, Fish, Yeast, Drosophila, Arabidopsis thaliana, Corn	Clonality	Monoclonal
Applications	WB	Conjugation	Unconjugated
Form / Buffer	Liquid in PBS containing 50% glycerol, 0.5% BSA and 0.02% sodium azide, pH 7.3.	Storage	at-20°C

BACKGROUND

Actin is a highly conserved protein that polymerizes to produce filaments that form cross-linked networks in the cytoplasm of cells . Actin exists in both monomeric (G-actin) and polymeric (F-actin) forms, both forms playing key functions, such as cell motility and contraction . In addition to their role in the cytoplasmic cytoskeleton, G- and F-actin also localize in the nucleus, and regulate gene transcription and motility and repair of damaged DNA . Plays a role in the assembly of the gamma-tubulin ring complex (gTuRC), which regulates the minus-end nucleation of alpha-beta tubulin heterodimers that grow into microtubule protofilaments . Part of the ACTR1A/ACTB filament around which the dynactin complex is built .

APPLICATION

To ensure optimal assay performance, AREX recommends conducting reagent titration tailored to each testing system for optimal detection results.

WB	1:500 - 1:1000
----	----------------

*Results are sample-specific. Please refer to your local assay conditions and test parameters for reference.

PRODUCT OVERVIEW

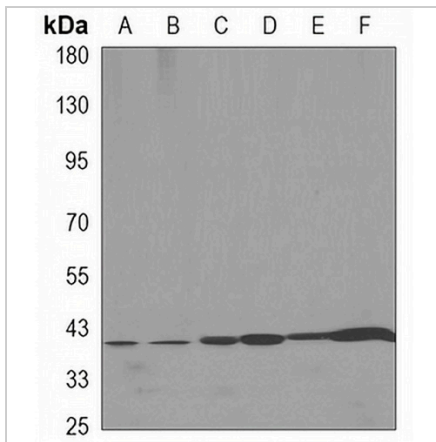
Description	Mouse monoclonal antibody to Beta-actin
Specificity	Recognizes endogenous levels of Beta-actin protein.
Antibody Type	Primary antibody
Immunogen	Purified recombinant human beta actin protein fragments expressed in E.coli.
Purification	The antibody was purified by immunogen affinity chromatography.
Molecular Weight	Predicted: 42 kD; Observed: 42 kD
Form/Buffer	Liquid in PBS containing 50% glycerol, 0.5% BSA and 0.02% sodium azide, pH 7.3.
Alternative Names	Actin cytoplasmic 1; Beta-actin
Gene Symbol	ACTB
Entrez Gene	60(Human); 11461(Mouse); 81822(Rat)
SwissProt	P60709(Human); P60710(Mouse); P60711(Rat)

*AREX continuously optimizes our products. Webpage content may not reflect the latest updates. For inquiries, please contact info@arex.bio or your local distributor.

*Clone Number, Reactivity, Source/Host and Clonality can be found in the product name and Key Features section above.

DATASHEET**Beta-actin Mouse Monoclonal Antibody(C3446)**

CAT. NO. AMA03058

DATA

Western blot analysis of Beta-actin expression in C6 (A), NIH3T3 (B), COS7 (C), CHOK1 (D), K562 (E), goat muscle (F) whole cell lysates. (Predicted band size: 42 kD; Observed band size: 42 kD)

STORAGE

Store at 4°C short term. For long term storage, store at -20°C, avoiding freeze/thaw cycles.

NOTE

For Research Use Only. Not for diagnostic, therapeutics, prophylactic or in vivo use.