

DATASHEET

CHD3 Mouse Monoclonal Antibody(C3453)

CAT. NO. AMA03065

KEY FEATURES

Target	CHD3	Source / Host	Mouse
Reactivity	Human, Mouse, Rat	Clonality	Monoclonal
Applications	WB, IF/ICC, IP	Conjugation	Unconjugated
Form / Buffer	Liquid in PBS containing 50% glycerol, 0.5% BSA and 0.02% sodium azide, pH 7.3.	Storage	at-20°C

BACKGROUND

ATP-dependent chromatin-remodeling factor that binds and distorts nucleosomal DNA . Acts as a component of the histone deacetylase NuRD complex which participates in the remodeling of chromatin . Involved in transcriptional repression as part of the NuRD complex . Required for anchoring centrosomal pericentrin in both interphase and mitosis, for spindle organization and centrosome integrity .

APPLICATION

To ensure optimal assay performance, AREX recommends conducting reagent titration tailored to each testing system for optimal detection results.

WB	1:500 - 1:1000
IF/ICC	1:50 - 1:100
IP	1:10 - 1:50

*Results are sample-specific. Please refer to your local assay conditions and test parameters for reference.

PRODUCT OVERVIEW

Description	Mouse monoclonal antibody to CHD3
Specificity	Recognizes endogenous levels of CHD3 protein.
Antibody Type	Primary antibody
Immunogen	Purified recombinant human CHD3 (C-terminus) protein fragments expressed in E.coli.
Purification	The antibody was purified by immunogen affinity chromatography.
Molecular Weight	Predicted: 227 kD; Observed: 260 kD
Form/Buffer	Liquid in PBS containing 50% glycerol, 0.5% BSA and 0.02% sodium azide, pH 7.3.
Alternative Names	Chromodomain-helicase-DNA-binding protein 3; CHD-3; ATP-dependent helicase CHD3; Mi-2 autoantigen 240 kDa protein; Mi2-alpha; Zinc finger helicase; hZFH
Gene Symbol	CHD3
Entrez Gene	1107(Human)
SwissProt	Q12873(Human)

*AREX continuously optimizes our products. Webpage content may not reflect the latest updates. For inquiries, please contact info@arexbio.com or your local distributor.

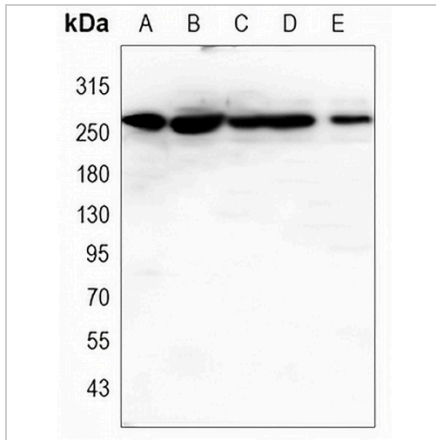
*Clone Number, Reactivity, Source/Host and Clonality can be found in the product name and Key Features section above.

DATASHEET

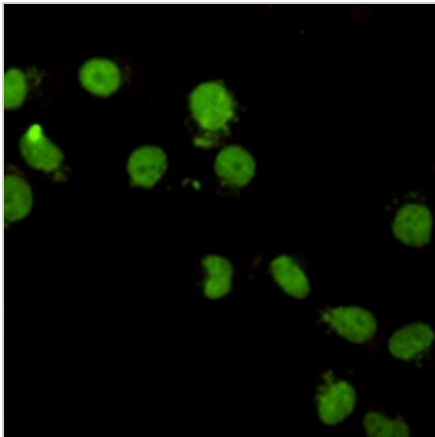
CHD3 Mouse Monoclonal Antibody(C3453)

CAT. NO. AMA03065

DATA



Western blot analysis of CHD3 expression in NTERA2 (A), NIH3T3 (B), C6 (C), K562 (D), HeLa (E) whole cell lysates. (Predicted band size: 227 kD; Observed band size: 260 kD)



Immunofluorescent analysis of CHD3 staining in HeLa cells. Formalin-fixed cells were permeabilized with 0.1% Triton X-100 in TBS for 5-10 minutes and blocked with 3% BSA-PBS for 30 minutes at room temperature. Cells were probed with the primary antibody in 3% BSA-PBS and incubated overnight at 4 °C in a humidified chamber. Cells were washed with PBST and incubated with a AREX® Fluor 488 -conjugated secondary antibody (green) in PBS at room temperature in the dark.

STORAGE

Store at 4°C short term. For long term storage, store at -20°C, avoiding freeze/thaw cycles.

NOTE

For Research Use Only. Not for diagnostic, therapeutics, prophylactic or in vivo use.