

DATASHEET

Cytokeratin 18 Mouse Monoclonal Antibody(C3458)

CAT. NO. AMA03070

KEY FEATURES

| | | | |
|---------------|---|---------------|--------------|
| Target | Cytokeratin 18 | Source / Host | Mouse |
| Reactivity | Human, Monkey | Clonality | Monoclonal |
| Applications | WB, IF/ICC | Conjugation | Unconjugated |
| Form / Buffer | Liquid in PBS containing 50% glycerol, 0.5% BSA and 0.02% sodium azide, pH 7.3. | Storage | at-20°C |

BACKGROUND

Required for the formation of KRT8/KRT18 filaments that are involved in ARHGEF40-mediated actin stress fiber formation and tensional force-induced stress fiber formation and reinforcement . Also acts downstream of ROCK kinase activation as part of a positive feedback mechanism in response to cellular mechanical stress loading . Organization and orientation of KRT18 filaments are responsible for the properly elongated morphology of epithelial tubules . Involved in the uptake of thrombin-antithrombin complexes by hepatic cells . When phosphorylated, plays a role in filament reorganization. Involved in the delivery of mutated CFTR to the plasma membrane. Together with KRT8, is involved in interleukin-6 (IL-6)-mediated barrier protection.

APPLICATION

To ensure optimal assay performance, AREX recommends conducting reagent titration tailored to each testing system for optimal detection results.

| | |
|--------|----------------|
| WB | 1:500 - 1:1000 |
| IF/ICC | 1:50 - 1:100 |

*Results are sample-specific. Please refer to your local assay conditions and test parameters for reference.

PRODUCT OVERVIEW

| | |
|-------------------|--|
| Description | Mouse monoclonal antibody to Cytokeratin 18 |
| Specificity | Recognizes endogenous levels of Cytokeratin 18 protein. |
| Antibody Type | Primary antibody |
| Immunogen | Purified recombinant human Keratin 18 protein fragments expressed in E.coli. |
| Purification | The antibody was purified by immunogen affinity chromatography. |
| Molecular Weight | Predicted: 48 kD; Observed: 48 kD |
| Form/Buffer | Liquid in PBS containing 50% glycerol, 0.5% BSA and 0.02% sodium azide, pH 7.3. |
| Alternative Names | CYK18; Keratin type I cytoskeletal 18; Cell proliferation-inducing gene 46 protein; Cytokeratin-18; CK-18; Keratin-18; K18 |
| Gene Symbol | KRT18 |
| Entrez Gene | 3875(Human) |
| SwissProt | P05783(Human) |

*AREX continuously optimizes our products. Webpage content may not reflect the latest updates. For inquiries, please contact info@arexbio.com or your local distributor.

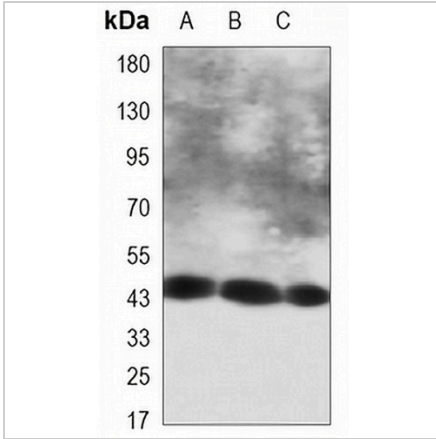
*Clone Number, Reactivity, Source/Host and Clonality can be found in the product name and Key Features section above.

DATASHEET

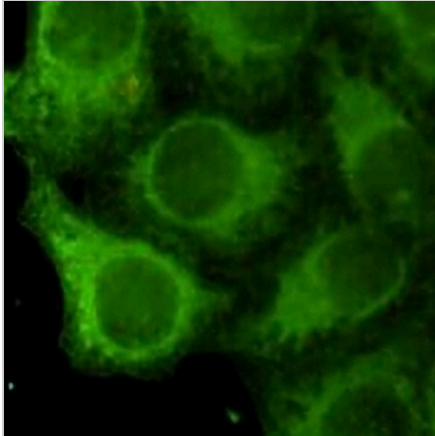
Cytokeratin 18 Mouse Monoclonal Antibody(C3458)

CAT. NO. AMA03070

DATA



Western blot analysis of Cytokeratin 18 expression in HeLa (A), COS7 (B), 293T (C) whole cell lysates. (Predicted band size: 48 kD; Observed band size: 48 kD)



Immunofluorescent analysis of Cytokeratin 18 staining in HeLa cells. Formalin-fixed cells were permeabilized with 0.1% Triton X-100 in TBS for 5-10 minutes and blocked with 3% BSA-PBS for 30 minutes at room temperature. Cells were probed with the primary antibody in 3% BSA-PBS and incubated overnight at 4 °C in a humidified chamber. Cells were washed with PBST and incubated with a AREX® Fluor 488 -conjugated secondary antibody (green) in PBS at room temperature in the dark.

STORAGE

Store at 4°C short term. For long term storage, store at -20°C, avoiding freeze/thaw cycles.

NOTE

For Research Use Only. Not for diagnostic, therapeutics, prophylactic or in vivo use.