

## DATASHEET

# GSK3 beta Mouse Monoclonal Antibody(C3459)

CAT. NO. AMA03071

### KEY FEATURES

|               |   |               |              |
|---------------|---|---------------|--------------|
| Target        | GSK3 beta   | Source / Host | Mouse        |
| Reactivity    | Human, Mouse, Rat   | Clonality     | Monoclonal   |
| Applications  | WB, IF/ICC, IP, FC  | Conjugation   | Unconjugated |
| Form / Buffer | Liquid in PBS containing 50% glycerol, 0.5% BSA and 0.02% sodium azide, pH 7.3. | Storage       | at-20°C      |

### BACKGROUND

Constitutively active protein kinase that acts as a negative regulator in the hormonal control of glucose homeostasis, Wnt signaling and regulation of transcription factors and microtubules, by phosphorylating and inactivating glycogen synthase (GYS1 or GYS2), EIF2B, CTNNB1/beta-catenin, APC, AXIN1, DPYSL2/CRMP2, JUN, NFATC1/NFATC, MAPT/TAU and MACF1, EIF2B, CTNNB1/beta-catenin, APC, AXIN1, DPYSL2/CRMP2, JUN, NFATC1/NFATC, MAPT/TAU and MACF1. Requires primed phosphorylation of the majority of its substrates. In skeletal muscle, contributes to insulin regulation of glycogen synthesis by phosphorylating and inhibiting GYS1 activity and hence glycogen synthesis. May also mediate the development of insulin resistance by regulating activation of transcription factors.

### APPLICATION

To ensure optimal assay performance, AREX recommends conducting reagent titration tailored to each testing system for optimal detection results.

|        |                |
|--------|----------------|
| WB     | 1:500 - 1:1000 |
| IF/ICC | 1:50 - 1:100   |
| IP     | 1:10 - 1:50    |
| FC     | 1:50 - 1:100   |

\*Results are sample-specific. Please refer to your local assay conditions and test parameters for reference.

### PRODUCT OVERVIEW

|                   |  |
|-------------------|--|
| Description       | Mouse monoclonal antibody to GSK3 beta   |
| Specificity       | Recognizes endogenous levels of GSK3 beta protein.                                 |
| Antibody Type     | Primary antibody   |
| Immunogen         | Purified recombinant GSK-3 $\beta$ protein fragments expressed in E.coli.          |
| Purification      | The antibody was purified by immunogen affinity chromatography.                    |
| Molecular Weight  | Predicted: 47 kD; Observed: 47 kD  |
| Form/Buffer       | Liquid in PBS containing 50% glycerol, 0.5% BSA and 0.02% sodium azide, pH 7.3.    |
| Alternative Names | Glycogen synthase kinase-3 beta; GSK-3 beta; Serine/threonine-protein kinase GSK3B |
| Gene Symbol       | GSK3B  |
| Entrez Gene       | 2932(Human); 56637(Mouse); 84027(Rat)  |
| SwissProt         | P49841(Human); Q9WW60(Mouse); P18266(Rat)  |

\*AREX continuously optimizes our products. Webpage content may not reflect the latest updates. For inquiries, please contact [info@arexbio.com](mailto:info@arexbio.com) or your local distributor.

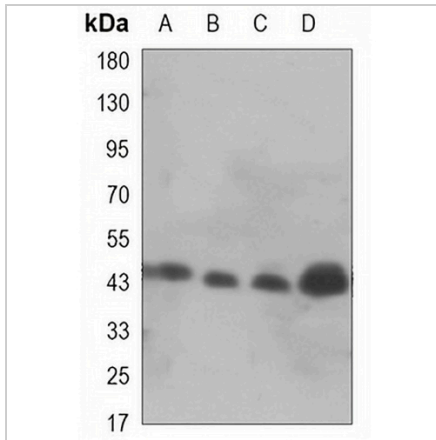
\*Clone Number, Reactivity, Source/Host and Clonality can be found in the product name and Key Features section above.

**DATASHEET**

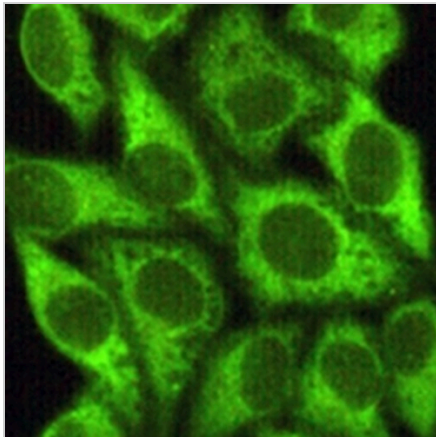
**GSK3 beta Mouse Monoclonal Antibody(C3459)**

CAT. NO. AMA03071

**DATA**



Western blot analysis of GSK3 beta expression in A549 (A), HeLa (B), NIH3T3 (C), rat brain (D) whole cell lysates. (Predicted band size: 47 kD; Observed band size: 47 kD)



Immunofluorescent analysis of GSK3 beta staining in HeLa cells. Formalin-fixed cells were permeabilized with 0.1% Triton X-100 in TBS for 5-10 minutes and blocked with 3% BSA-PBS for 30 minutes at room temperature. Cells were probed with the primary antibody in 3% BSA-PBS and incubated overnight at 4 °C in a humidified chamber. Cells were washed with PBST and incubated with a AREX® Fluor 488 -conjugated secondary antibody (green) in PBS at room temperature in the dark.

**STORAGE**

Store at 4°C short term. For long term storage, store at -20°C, avoiding freeze/thaw cycles.

**NOTE**

For Research Use Only. Not for diagnostic, therapeutics, prophylactic or in vivo use.