

**DATASHEET**

**Cyclin H Mouse Monoclonal Antibody(C3463)**

CAT. NO. AMA03075

**KEY FEATURES**

Target	Cyclin H	Source / Host	Mouse
Reactivity	Human, Mouse	Clonality	Monoclonal
Applications	WB	Conjugation	Unconjugated
Form / Buffer	Liquid in PBS containing 50% glycerol, 0.5% BSA and 0.02% sodium azide, pH 7.3.	Storage	at-20°C

**BACKGROUND**

Regulates CDK7, the catalytic subunit of the CDK-activating kinase (CAK) enzymatic complex. CAK activates the cyclin-associated kinases CDK1, CDK2, CDK4 and CDK6 by threonine phosphorylation. CAK complexed to the core-TFIIF basal transcription factor activates RNA polymerase II by serine phosphorylation of the repetitive C-terminal domain (CTD) of its large subunit (POLR2A), allowing its escape from the promoter and elongation of the transcripts. Involved in cell cycle control and in RNA transcription by RNA polymerase II. Its expression and activity are constant throughout the cell cycle.

**APPLICATION**

To ensure optimal assay performance, AREX recommends conducting reagent titration tailored to each testing system for optimal detection results.

WB	1:500 - 1:1000
----	----------------

\*Results are sample-specific. Please refer to your local assay conditions and test parameters for reference.

**PRODUCT OVERVIEW**

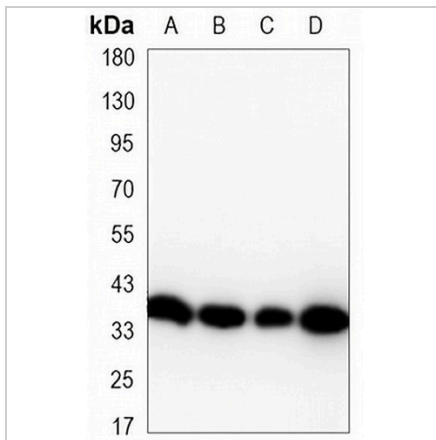
Description	Mouse monoclonal antibody to Cyclin H
Specificity	Recognizes endogenous levels of Cyclin H protein.
Antibody Type	Primary antibody
Immunogen	Purified recombinant human Cyclin H protein fragments expressed in E.coli.
Purification	The antibody was purified by immunogen affinity chromatography.
Molecular Weight	Predicted: 38 kD; Observed: 38 kD
Form/Buffer	Liquid in PBS containing 50% glycerol, 0.5% BSA and 0.02% sodium azide, pH 7.3.
Alternative Names	Cyclin-H; MO15-associated protein; p34; p37
Gene Symbol	CCNH
Entrez Gene	902(Human); 66671(Mouse)
SwissProt	P51946(Human); Q61458(Mouse)

\*AREX continuously optimizes our products. Webpage content may not reflect the latest updates. For inquiries, please contact [info@arexbio.com](mailto:info@arexbio.com) or your local distributor.

\*Clone Number, Reactivity, Source/Host and Clonality can be found in the product name and Key Features section above.

**DATASHEET****Cyclin H Mouse Monoclonal Antibody(C3463)**

CAT. NO. AMA03075

**DATA**

Western blot analysis of Cyclin H expression in Jurkat (A), K562 (B), HeLa (C), NIH3T3 (D) whole cell lysates. (Predicted band size: 38 kD; Observed band size: 38 kD)

**STORAGE**

Store at 4°C short term. For long term storage, store at -20°C, avoiding freeze/thaw cycles.

**NOTE**

For Research Use Only. Not for diagnostic, therapeutics, prophylactic or in vivo use.