

DATASHEET

GRB2 Mouse Monoclonal Antibody(C3464)

CAT. NO. AMA03076

KEY FEATURES

Target	GRB2	Source / Host	Mouse
Reactivity	Human, Mouse, Rat	Clonality	Monoclonal
Applications	WB	Conjugation	Unconjugated
Form / Buffer	Liquid in PBS containing 50% glycerol, 0.5% BSA and 0.02% sodium azide, pH 7.3.	Storage	at-20°C

BACKGROUND

Non-enzymatic adapter protein that plays a pivotal role in precisely regulated signaling cascades from cell surface receptors to cellular responses, including signaling transduction and gene expression . Thus, participates in many biological processes including regulation of innate and adaptive immunity, autophagy, DNA repair or necroptosis . Controls signaling complexes at the T-cell antigen receptor to facilitate the activation, differentiation, and function of T-cells . Mechanistically, engagement of the TCR leads to phosphorylation of the adapter protein LAT, which serves as docking site for GRB2 .

APPLICATION

To ensure optimal assay performance, AREX recommends conducting reagent titration tailored to each testing system for optimal detection results.

WB	1:500 - 1:1000
----	----------------

*Results are sample-specific. Please refer to your local assay conditions and test parameters for reference.

PRODUCT OVERVIEW

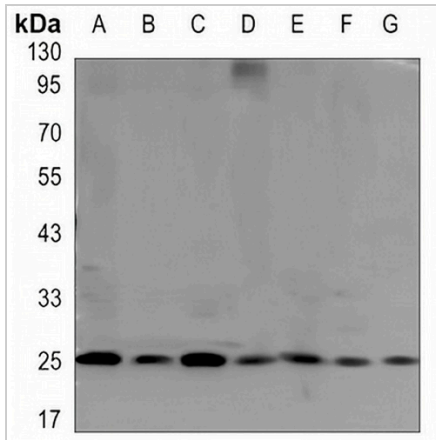
Description	Mouse monoclonal antibody to GRB2
Specificity	Recognizes endogenous levels of GRB2 protein.
Antibody Type	Primary antibody
Immunogen	Recombinant protein of human GRB2.
Purification	The antibody was purified by immunogen affinity chromatography.
Molecular Weight	Predicted: 25 kD; Observed: 25 kD
Form/Buffer	Liquid in PBS containing 50% glycerol, 0.5% BSA and 0.02% sodium azide, pH 7.3.
Alternative Names	ASH; Growth factor receptor-bound protein 2; Adapter protein GRB2; Protein Ash; SH2/SH3 adapter GRB2
Gene Symbol	GRB2
Entrez Gene	2885(Human); 14784(Mouse); 81504(Rat)
SwissProt	P62993(Human); Q60631(Mouse); P62994(Rat)

*AREX continuously optimizes our products. Webpage content may not reflect the latest updates. For inquiries, please contact info@arexbio.com or your local distributor.

*Clone Number, Reactivity, Source/Host and Clonality can be found in the product name and Key Features section above.

DATASHEET**GRB2 Mouse Monoclonal Antibody(C3464)**

CAT. NO. AMA03076

DATA

Western blot analysis of GRB2 expression in K562 (A), Raji (B), Jurkat (C), Ramos (D), C6 (E), NIH3T3 (F), HeLa (G) whole cell lysates. (Predicted band size: 25 kD; Observed band size: 25 kD)

STORAGE

Store at 4°C short term. For long term storage, store at -20°C, avoiding freeze/thaw cycles.

NOTE

For Research Use Only. Not for diagnostic, therapeutics, prophylactic or in vivo use.