

## DATASHEET

# Pyruvate Kinase Mouse Monoclonal Antibody(C3471)

CAT. NO. AMA03083

### KEY FEATURES

Target	Pyruvate Kinase	Source / Host	Mouse
Reactivity	Human, Mouse, Rat, Monkey	Clonality	Monoclonal
Applications	WB, IF/ICC	Conjugation	Unconjugated
Form / Buffer	Liquid in PBS containing 50% glycerol, 0.5% BSA and 0.02% sodium azide, pH 7.3.	Storage	at-20°C

### BACKGROUND

Catalyzes the final rate-limiting step of glycolysis by mediating the transfer of a phosphoryl group from phosphoenolpyruvate (PEP) to ADP, generating ATP to ADP, generating ATP . The ratio between the highly active tetrameric form and nearly inactive dimeric form determines whether glucose carbons are channeled to biosynthetic processes or used for glycolytic ATP production . The transition between the 2 forms contributes to the control of glycolysis and is important for tumor cell proliferation and survival .

### APPLICATION

To ensure optimal assay performance, AREX recommends conducting reagent titration tailored to each testing system for optimal detection results.

WB	1:500 - 1:1000
IF/ICC	1:50 - 1:100

\*Results are sample-specific. Please refer to your local assay conditions and test parameters for reference.

### PRODUCT OVERVIEW

Description	Mouse monoclonal antibody to Pyruvate Kinase
Specificity	Recognizes endogenous levels of Pyruvate Kinase protein.
Antibody Type	Primary antibody
Immunogen	Purified recombinant human PKM2 protein fragments expressed in E.coli.
Purification	The antibody was purified by immunogen affinity chromatography.
Molecular Weight	Predicted: 58 kD; Observed: 58 kD
Form/Buffer	Liquid in PBS containing 50% glycerol, 0.5% BSA and 0.02% sodium azide, pH 7.3.
Alternative Names	OIP3; PK2; PK3; PKM2; Pyruvate kinase PKM; Cytosolic thyroid hormone-binding protein; CTHBP; Opa-interacting protein 3; OIP-3; Pyruvate kinase 2/3; Pyruvate kinase muscle isozyme; Thyroid hormone-binding protein 1; THBP1; Tumor M2-PK; p58
Gene Symbol	PKM
Entrez Gene	5315(Human); 18746(Mouse); 25630(Rat)
SwissProt	P14618(Human); P52480(Mouse); P11980(Rat)

\*AREX continuously optimizes our products. Webpage content may not reflect the latest updates. For inquiries, please contact [info@arexbio.com](mailto:info@arexbio.com) or your local distributor.

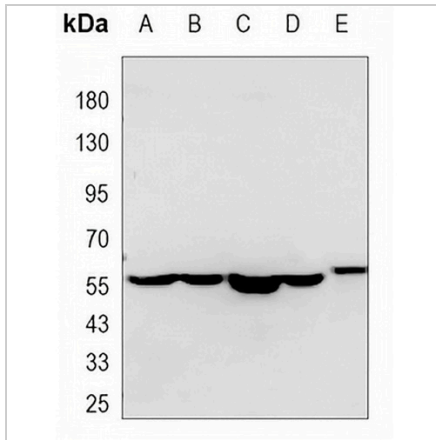
\*Clone Number, Reactivity, Source/Host and Clonality can be found in the product name and Key Features section above.

**DATASHEET**

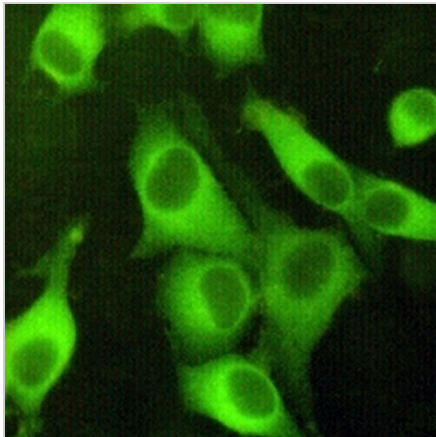
**Pyruvate Kinase Mouse Monoclonal Antibody(C3471)**

CAT. NO. AMA03083

**DATA**



Western blot analysis of Pyruvate Kinase expression in COS7 (A), PC12 (B), C6 (C), NIH3T3 (D), HeLa (E) whole cell lysates. (Predicted band size: 58 kD; Observed band size: 58 kD)



Immunofluorescent analysis of Pyruvate Kinase staining in HeLa cells. Formalin-fixed cells were permeabilized with 0.1% Triton X-100 in TBS for 5-10 minutes and blocked with 3% BSA-PBS for 30 minutes at room temperature. Cells were probed with the primary antibody in 3% BSA-PBS and incubated overnight at 4 °C in a humidified chamber. Cells were washed with PBST and incubated with a ARES® Fluor 488 -conjugated secondary antibody (green) in PBS at room temperature in the dark.

**STORAGE**

Store at 4°C short term. For long term storage, store at -20°C, avoiding freeze/thaw cycles.

**NOTE**

For Research Use Only. Not for diagnostic, therapeutics, prophylactic or in vivo use.