

## DATASHEET

# Aldose Reductase Mouse Monoclonal Antibody(C3472)

CAT. NO. AMA03084

### KEY FEATURES

Target	Aldose Reductase	Source / Host	Mouse
Reactivity	Human, Mouse, Rat	Clonality	Monoclonal
Applications	WB	Conjugation	Unconjugated
Form / Buffer	Liquid in PBS containing 50% glycerol, 0.5% BSA and 0.02% sodium azide, pH 7.3.	Storage	at-20°C

### BACKGROUND

Catalyzes the NADPH-dependent reduction of a wide variety of carbonyl-containing compounds to their corresponding alcohols. Displays enzymatic activity towards endogenous metabolites such as aromatic and aliphatic aldehydes, ketones, monosaccharides, bile acids and xenobiotics substrates. Key enzyme in the polyol pathway, catalyzes reduction of glucose to sorbitol during hyperglycemia . Reduces steroids and their derivatives and prostaglandins. Displays low enzymatic activity toward all-trans-retinal, 9-cis-retinal, and 13-cis-retinal .

### APPLICATION

To ensure optimal assay performance, AREX recommends conducting reagent titration tailored to each testing system for optimal detection results.

WB	1:500 - 1:1000
----	----------------

\*Results are sample-specific. Please refer to your local assay conditions and test parameters for reference.

### PRODUCT OVERVIEW

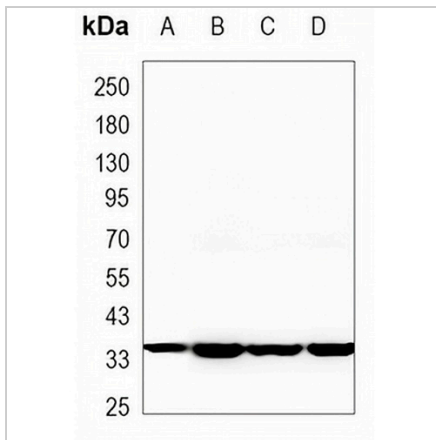
Description	Mouse monoclonal antibody to Aldose Reductase
Specificity	Recognizes endogenous levels of Aldose Reductase protein.
Antibody Type	Primary antibody
Immunogen	Purified recombinant human AKR1B1 protein fragments expressed in E.coli.
Purification	The antibody was purified by immunogen affinity chromatography.
Molecular Weight	Predicted: 36 kD; Observed: 36 kD
Form/Buffer	Liquid in PBS containing 50% glycerol, 0.5% BSA and 0.02% sodium azide, pH 7.3.
Alternative Names	ALDR1; Aldose reductase; AR; Aldehyde reductase; Aldo-keto reductase family 1 member B1
Gene Symbol	AKR1B1
Entrez Gene	231(Human); 11677(Mouse); 24192(Rat)
SwissProt	P15121(Human); P45376(Mouse); P07943(Rat)

\*AREX continuously optimizes our products. Webpage content may not reflect the latest updates. For inquiries, please contact [info@arexbio.com](mailto:info@arexbio.com) or your local distributor.

\*Clone Number, Reactivity, Source/Host and Clonality can be found in the product name and Key Features section above.

**DATASHEET****Aldose Reductase Mouse Monoclonal Antibody(C3472)**

CAT. NO. AMA03084

**DATA**

Western blot analysis of Aldose Reductase expression in C6 (A), NIH3T3 (B), Jurkat (C), Hela (D) whole cell lysates. (Predicted band size: 36 kD; Observed band size: 36 kD)

**STORAGE**

Store at 4°C short term. For long term storage, store at -20°C, avoiding freeze/thaw cycles.

**NOTE**

For Research Use Only. Not for diagnostic, therapeutics, prophylactic or in vivo use.