

## DATASHEET

# OMI Mouse Monoclonal Antibody(C3482)

CAT. NO. AMA03094

### KEY FEATURES

|               |   |               |              |
|---------------|---|---------------|--------------|
| Target        | OMI   | Source / Host | Mouse        |
| Reactivity    | Human   | Clonality     | Monoclonal   |
| Applications  | WB, IP  | Conjugation   | Unconjugated |
| Form / Buffer | Liquid in PBS containing 50% glycerol, 0.5% BSA and 0.02% sodium azide, pH 7.3. | Storage       | at-20°C      |

### BACKGROUND

Serine protease that shows proteolytic activity against a non-specific substrate beta-casein . Promotes apoptosis by either relieving the inhibition of BIRC proteins on caspases, leading to an increase in caspase activity; or by a BIRC inhibition-independent, caspase-independent and serine protease activity-dependent mechanism . Cleaves BIRC6 and relieves its inhibition on CASP3, CASP7 and CASP9, but it is also prone to inhibition by BIRC6 . Cleaves THAP5 and promotes its degradation during apoptosis .

### APPLICATION

To ensure optimal assay performance, AREX recommends conducting reagent titration tailored to each testing system for optimal detection results.

|    |                |
|----|----------------|
| WB | 1:500 - 1:1000 |
| IP | 1:10 - 1:50    |

\*Results are sample-specific. Please refer to your local assay conditions and test parameters for reference.

### PRODUCT OVERVIEW

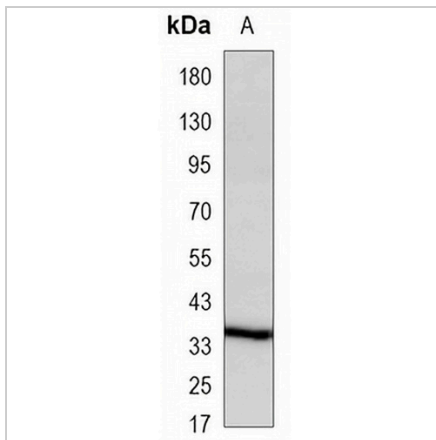
|                   |  |
|-------------------|--|
| Description       | Mouse monoclonal antibody to OMI   |
| Specificity       | Recognizes endogenous levels of OMI protein.   |
| Antibody Type     | Primary antibody   |
| Immunogen         | Recombinant human HtrA2/Omi protein.   |
| Purification      | The antibody was purified by immunogen affinity chromatography.  |
| Molecular Weight  | Predicted: 49 kD; Observed: 37 kD  |
| Form/Buffer       | Liquid in PBS containing 50% glycerol, 0.5% BSA and 0.02% sodium azide, pH 7.3.  |
| Alternative Names | OMI; PRSS25; Serine protease HTRA2 mitochondrial; High temperature requirement protein A2; HtrA2; Omi stress-regulated endoprotease; Serine protease 25; Serine proteinase OMI |
| Gene Symbol       | HTRA2  |
| Entrez Gene       | 27429(Human)   |
| SwissProt         | O43464(Human)  |

\*AREX continuously optimizes our products. Webpage content may not reflect the latest updates. For inquiries, please contact [info@arexbio.com](mailto:info@arexbio.com) or your local distributor.

\*Clone Number, Reactivity, Source/Host and Clonality can be found in the product name and Key Features section above.

**DATASHEET****OMI Mouse Monoclonal Antibody(C3482)**

CAT. NO. AMA03094

**DATA**

Western blot analysis of OMI expression in 293T (A) whole cell lysates. (Predicted band size: 49 kD; Observed band size: 37 kD)

**STORAGE**

Store at 4°C short term. For long term storage, store at -20°C, avoiding freeze/thaw cycles.

**NOTE**

For Research Use Only. Not for diagnostic, therapeutics, prophylactic or in vivo use.