

DATASHEET

14-3-3 eta Mouse Monoclonal Antibody(C3484)

CAT. NO. AMA03096

KEY FEATURES

| | | | |
|---------------|---|---------------|--------------|
| Target | 14-3-3 eta | Source / Host | Mouse |
| Reactivity | Human, Mouse, Rat | Clonality | Monoclonal |
| Applications | WB | Conjugation | Unconjugated |
| Form / Buffer | Liquid in PBS containing 50% glycerol, 0.5% BSA and 0.02% sodium azide, pH 7.3. | Storage | at-20°C |

BACKGROUND

Adapter protein implicated in the regulation of a large spectrum of both general and specialized signaling pathways. Binds to a large number of partners, usually by recognition of a phosphoserine or phosphothreonine motif. Binding generally results in the modulation of the activity of the binding partner. Negatively regulates the kinase activity of PDPK1.

APPLICATION

To ensure optimal assay performance, AREX recommends conducting reagent titration tailored to each testing system for optimal detection results.

| | |
|----|----------------|
| WB | 1:500 - 1:1000 |
|----|----------------|

*Results are sample-specific. Please refer to your local assay conditions and test parameters for reference.

PRODUCT OVERVIEW

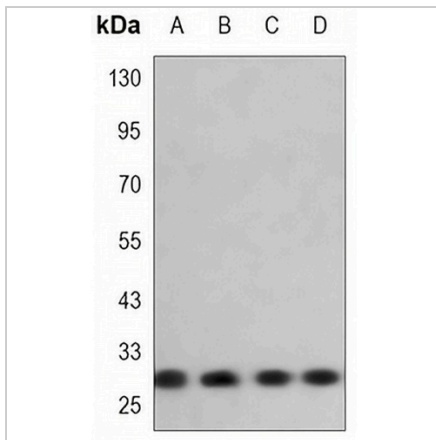
| | |
|-------------------|---|
| Description | Mouse monoclonal antibody to 14-3-3 eta |
| Specificity | Recognizes endogenous levels of 14-3-3 eta protein. |
| Antibody Type | Primary antibody |
| Immunogen | Antibodies are produced by immunizing animals with a synthetic peptide corresponding to the sequence of human 14-3-3 η. |
| Purification | The antibody was purified by immunogen affinity chromatography. |
| Molecular Weight | Predicted: 28 kD; Observed: 28 kD |
| Form/Buffer | Liquid in PBS containing 50% glycerol, 0.5% BSA and 0.02% sodium azide, pH 7.3. |
| Alternative Names | YWHA1; 14-3-3 protein eta; Protein AS1 |
| Gene Symbol | YWHAH |
| Entrez Gene | 7533(Human); 22629(Mouse); 25576(Rat) |
| SwissProt | Q04917(Human); P68510(Mouse); P68511(Rat) |

*AREX continuously optimizes our products. Webpage content may not reflect the latest updates. For inquiries, please contact info@arexbio.com or your local distributor.

*Clone Number, Reactivity, Source/Host and Clonality can be found in the product name and Key Features section above.

DATASHEET**14-3-3 eta Mouse Monoclonal Antibody(C3484)**

CAT. NO. AMA03096

DATA

Western blot analysis of 14-3-3 eta expression in HeLa (A), NIH3T3 (B), COS7 (C), C2C12 (D) whole cell lysates. (Predicted band size: 28 kD; Observed band size: 28 kD)

STORAGE

Store at 4°C short term. For long term storage, store at -20°C, avoiding freeze/thaw cycles.

NOTE

For Research Use Only. Not for diagnostic, therapeutics, prophylactic or in vivo use.