

DATASHEET

Lamin A/C Mouse Monoclonal Antibody(C3488)

CAT. NO. AMA03100

KEY FEATURES

Target	Lamin A/C	Source / Host	Mouse
Reactivity	Human, Mouse, Rat	Clonality	Monoclonal
Applications	WB	Conjugation	Unconjugated
Form / Buffer	Liquid in PBS containing 50% glycerol, 0.5% BSA and 0.02% sodium azide, pH 7.3.	Storage	at-20°C

BACKGROUND

Lamins are intermediate filament proteins that assemble into a filamentous meshwork, and which constitute the major components of the nuclear lamina, a fibrous layer on the nucleoplasmic side of the inner nuclear membrane . Lamins provide a framework for the nuclear envelope, bridging the nuclear envelope and chromatin, thereby playing an important role in nuclear assembly, chromatin organization, nuclear membrane and telomere dynamics . Lamin A and C also regulate matrix stiffness by conferring nuclear mechanical properties . The structural integrity of the lamina is strictly controlled by the cell cycle, as seen by the disintegration and formation of the nuclear envelope in prophase and telophase, respectively . Lamin A and C are present in equal amounts in the lamina of mammals .

APPLICATION

To ensure optimal assay performance, AREX recommends conducting reagent titration tailored to each testing system for optimal detection results.

WB	1:500 - 1:1000
----	----------------

*Results are sample-specific. Please refer to your local assay conditions and test parameters for reference.

PRODUCT OVERVIEW

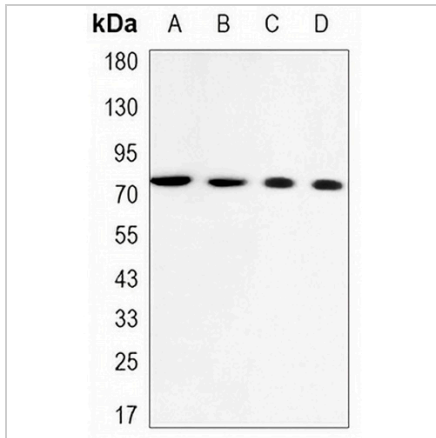
Description	Mouse monoclonal antibody to Lamin A/C
Specificity	Recognizes endogenous levels of Lamin A/C protein.
Antibody Type	Primary antibody
Immunogen	Purified recombinant human LMNA protein fragments expressed in E.coli.
Purification	The antibody was purified by immunogen affinity chromatography.
Molecular Weight	Predicted: 74 kD; Observed: 74 kD
Form/Buffer	Liquid in PBS containing 50% glycerol, 0.5% BSA and 0.02% sodium azide, pH 7.3.
Alternative Names	LMN1; Prelamin-A/C
Gene Symbol	LMNA
Entrez Gene	4000(Human); 16905(Mouse); 60374(Rat)
SwissProt	P02545(Human); P48678(Mouse); P48679(Rat)

*AREX continuously optimizes our products. Webpage content may not reflect the latest updates. For inquiries, please contact info@arexbio.com or your local distributor.

*Clone Number, Reactivity, Source/Host and Clonality can be found in the product name and Key Features section above.

DATASHEET**Lamin A/C Mouse Monoclonal Antibody(C3488)**

CAT. NO. AMA03100

DATA

Western blot analysis of Lamin A/C expression in K562 (A), C6 (B), NIH3T3 (C), HeLa (D) whole cell lysates. (Predicted band size: 74 kD; Observed band size: 74 kD)

STORAGE

Store at 4°C short term. For long term storage, store at -20°C, avoiding freeze/thaw cycles.

NOTE

For Research Use Only. Not for diagnostic, therapeutics, prophylactic or in vivo use.