

DATASHEET

Annexin A1 Mouse Monoclonal Antibody(C3493)

CAT. NO. AMA03105

KEY FEATURES

Target	Annexin A1	Source / Host	Mouse
Reactivity	Human, Mouse, Rat, Monkey	Clonality	Monoclonal
Applications	WB	Conjugation	Unconjugated
Form / Buffer	Liquid in PBS containing 50% glycerol, 0.5% BSA and 0.02% sodium azide, pH 7.3.	Storage	at-20°C

BACKGROUND

Plays important roles in the innate immune response as effector of glucocorticoid-mediated responses and regulator of the inflammatory process. Has anti-inflammatory activity . Plays a role in glucocorticoid-mediated down-regulation of the early phase of the inflammatory response . Contributes to the adaptive immune response by enhancing signaling cascades that are triggered by T-cell activation, regulates differentiation and proliferation of activated T cells . Promotes the differentiation of T cells into Th1 cells and negatively regulates differentiation into Th2 cells . Has no effect on unstimulated T cells . Negatively regulates hormone exocytosis via activation of the formyl peptide receptors and reorganization of the actin cytoskeleton .

APPLICATION

To ensure optimal assay performance, AREX recommends conducting reagent titration tailored to each testing system for optimal detection results.

WB	1:500 - 1:1000
----	----------------

*Results are sample-specific. Please refer to your local assay conditions and test parameters for reference.

PRODUCT OVERVIEW

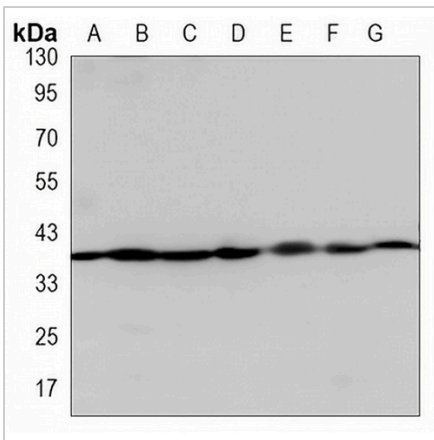
Description	Mouse monoclonal antibody to Annexin A1
Specificity	Recognizes endogenous levels of Annexin A1 protein.
Antibody Type	Primary antibody
Immunogen	Purified recombinant human Annexin A1 beta protein fragments expressed in E.coli.
Purification	The antibody was purified by immunogen affinity chromatography.
Molecular Weight	Predicted: 39 kD; Observed: 39 kD
Form/Buffer	Liquid in PBS containing 50% glycerol, 0.5% BSA and 0.02% sodium azide, pH 7.3.
Alternative Names	ANX1; LPC1; Annexin A1; Annexin I; Annexin-1; Calpactin II; Calpactin-2; Chromobindin-9; Lipocortin I; Phospholipase A2 inhibitory protein; p35
Gene Symbol	ANXA1
Entrez Gene	301(Human); 16952(Mouse); 25380(Rat)
SwissProt	P04083(Human); P10107(Mouse); P07150(Rat)

*AREX continuously optimizes our products. Webpage content may not reflect the latest updates. For inquiries, please contact info@arexbio.com or your local distributor.

*Clone Number, Reactivity, Source/Host and Clonality can be found in the product name and Key Features section above.

DATASHEET**Annexin A1 Mouse Monoclonal Antibody(C3493)**

CAT. NO. AMA03105

DATA

Western blot analysis of Annexin A1 expression in A549 (A), CHOK1 (B), COS7 (C), C2C12 (D), C6 (E), NIH3T3 (F), HeLa (G) whole cell lysates. (Predicted band size: 39 kD; Observed band size: 39 kD)

STORAGE

Store at 4°C short term. For long term storage, store at -20°C, avoiding freeze/thaw cycles.

NOTE

For Research Use Only. Not for diagnostic, therapeutics, prophylactic or in vivo use.