

DATASHEET

Gamma-enolase Mouse Monoclonal Antibody(C3495)

CAT. NO. AMA03107

KEY FEATURES

Target	Gamma-enolase	Source / Host	Mouse
Reactivity	Human, Mouse, Rat	Clonality	Monoclonal
Applications	WB, ELISA	Conjugation	Unconjugated
Form / Buffer	Liquid in PBS containing 50% glycerol, 0.5% BSA and 0.02% sodium azide, pH 7.3.	Storage	at-20°C

BACKGROUND

Enolase that catalyzes the conversion of 2-phosphoglycerate to phosphoenolpyruvate in glycolysis and the reverse reaction in gluconeogenesis . Has neurotrophic and neuroprotective properties on a broad spectrum of central nervous system (CNS) neurons. Binds, in a calcium-dependent manner, to cultured neocortical neurons and promotes cell survival .

APPLICATION

To ensure optimal assay performance, AREX recommends conducting reagent titration tailored to each testing system for optimal detection results.

WB	1:500 - 1:1000
ELISA	1:5000 - 1:10000

*Results are sample-specific. Please refer to your local assay conditions and test parameters for reference.

PRODUCT OVERVIEW

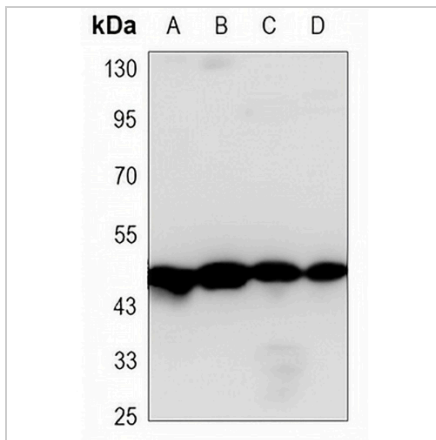
Description	Mouse monoclonal antibody to Gamma-enolase
Specificity	Recognizes endogenous levels of Gamma-enolase protein.
Antibody Type	Primary antibody
Immunogen	Synthetic peptide derived from human NSE.
Purification	The antibody was purified by immunogen affinity chromatography.
Molecular Weight	Predicted: 47 kD; Observed: 47 kD
Form/Buffer	Liquid in PBS containing 50% glycerol, 0.5% BSA and 0.02% sodium azide, pH 7.3.
Alternative Names	Gamma-enolase; 2-phospho-D-glycerate hydro-lyase; Enolase 2; Neural enolase; Neuron-specific enolase; NSE
Gene Symbol	ENO2
Entrez Gene	2026(Human); 13807(Mouse); 100911625; 24334(Rat)
SwissProt	P09104(Human); P17183(Mouse); P07323(Rat)

*AREX continuously optimizes our products. Webpage content may not reflect the latest updates. For inquiries, please contact info@arexbio.com or your local distributor.

*Clone Number, Reactivity, Source/Host and Clonality can be found in the product name and Key Features section above.

DATASHEET**Gamma-enolase Mouse Monoclonal Antibody(C3495)**

CAT. NO. AMA03107

DATA

Western blot analysis of Gamma-enolase expression in SHSY5Y (A), U87MG (B), rat brain (C), mouse brain (D) whole cell lysates. (Predicted band size: 47 kD; Observed band size: 47 kD)

STORAGE

Store at 4°C short term. For long term storage, store at -20°C, avoiding freeze/thaw cycles.

NOTE

For Research Use Only. Not for diagnostic, therapeutics, prophylactic or in vivo use.