

DATASHEET

Gamma-enolase Mouse Monoclonal Antibody(C3496)

CAT. NO. AMA03108

KEY FEATURES

Target	Gamma-enolase	Source / Host	Mouse
Reactivity	Human, Mouse, Rat	Clonality	Monoclonal
Applications	WB, ELISA	Conjugation	Unconjugated
Form / Buffer	Liquid in PBS containing 50% glycerol, 0.5% BSA and 0.02% sodium azide, pH 7.3.	Storage	at-20°C

BACKGROUND

Enolase that catalyzes the conversion of 2-phosphoglycerate to phosphoenolpyruvate in glycolysis and the reverse reaction in gluconeogenesis. Has neurotrophic and neuroprotective properties on a broad spectrum of central nervous system (CNS) neurons. Binds, in a calcium-dependent manner, to cultured neocortical neurons and promotes cell survival.

APPLICATION

To ensure optimal assay performance, AREX recommends conducting reagent titration tailored to each testing system for optimal detection results.

WB	1:500 - 1:1000
ELISA	1:5000 - 1:10000

*Results are sample-specific. Please refer to your local assay conditions and test parameters for reference.

PRODUCT OVERVIEW

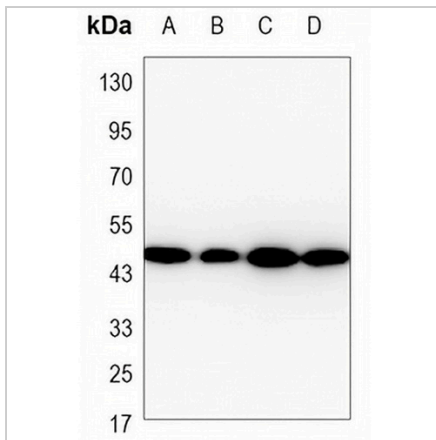
Description	Mouse monoclonal antibody to Gamma-enolase
Specificity	Recognizes endogenous levels of Gamma-enolase protein.
Antibody Type	Primary antibody
Immunogen	Synthetic peptide derived from human NSE.
Purification	The antibody was purified by immunogen affinity chromatography.
Molecular Weight	Predicted: 47 kD; Observed: 47 kD
Form/Buffer	Liquid in PBS containing 50% glycerol, 0.5% BSA and 0.02% sodium azide, pH 7.3.
Alternative Names	Gamma-enolase; 2-phospho-D-glycerate hydro-lyase; Enolase 2; Neural enolase; Neuron-specific enolase; NSE
Gene Symbol	ENO2
Entrez Gene	2026(Human); 13807(Mouse); 100911625; 24334(Rat)
SwissProt	P09104(Human); P17183(Mouse); P07323(Rat)

*AREX continuously optimizes our products. Webpage content may not reflect the latest updates. For inquiries, please contact info@arexbio.com or your local distributor.

*Clone Number, Reactivity, Source/Host and Clonality can be found in the product name and Key Features section above.

DATASHEET**Gamma-enolase Mouse Monoclonal Antibody(C3496)**

CAT. NO. AMA03108

DATA

Western blot analysis of Gamma-enolase expression in SHSY5Y (A), U87MG (B), rat brain (C), mouse brain (D) whole cell lysates. (Predicted band size: 47 kD; Observed band size: 47 kD)

STORAGE

Store at 4°C short term. For long term storage, store at -20°C, avoiding freeze/thaw cycles.

NOTE

For Research Use Only. Not for diagnostic, therapeutics, prophylactic or in vivo use.