

DATASHEET

SOD2 Mouse Monoclonal Antibody(C3504)

CAT. NO. AMA03116

KEY FEATURES

Target	SOD2	Source / Host	Mouse
Reactivity	Human	Clonality	Monoclonal
Applications	WB	Conjugation	Unconjugated
Form / Buffer	Liquid in PBS containing 50% glycerol, 0.5% BSA and 0.02% sodium azide, pH 7.3.	Storage	at-20°C

BACKGROUND

Destroys superoxide anion radicals which are normally produced within the cells and which are toxic to biological systems.

APPLICATION

To ensure optimal assay performance, AREX recommends conducting reagent titration tailored to each testing system for optimal detection results.

WB	1:500 - 1:1000
----	----------------

*Results are sample-specific. Please refer to your local assay conditions and test parameters for reference.

PRODUCT OVERVIEW

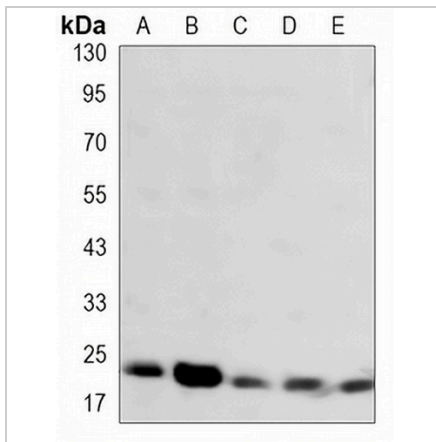
Description	Mouse monoclonal antibody to SOD2
Specificity	Recognizes endogenous levels of SOD2 protein.
Antibody Type	Primary antibody
Immunogen	Synthetic peptide corresponding to human SOD2 protein
Purification	The antibody was purified by immunogen affinity chromatography.
Molecular Weight	Predicted: 25 kD; Observed: 22 kD
Form/Buffer	Liquid in PBS containing 50% glycerol, 0.5% BSA and 0.02% sodium azide, pH 7.3.
Alternative Names	Superoxide dismutase [Mn] mitochondrial
Gene Symbol	SOD2
Entrez Gene	6648(Human)
SwissProt	P04179(Human)

*AREX continuously optimizes our products. Webpage content may not reflect the latest updates. For inquiries, please contact info@arexbio.com or your local distributor.

*Clone Number, Reactivity, Source/Host and Clonality can be found in the product name and Key Features section above.

DATASHEET**SOD2 Mouse Monoclonal Antibody(C3504)**

CAT. NO. AMA03116

DATA

Western blot analysis of SOD2 expression in HeLa (A), THP1 (B), A549 (C), K562 (D), Ramos (E) whole cell lysates. (Predicted band size: 25 kD; Observed band size: 22 kD)

STORAGE

Store at 4°C short term. For long term storage, store at -20°C, avoiding freeze/thaw cycles.

NOTE

For Research Use Only. Not for diagnostic, therapeutics, prophylactic or in vivo use.