

**DATASHEET**

**Kappa light chain Mouse Monoclonal Antibody(C3507)**

CAT. NO. AMA03119

**KEY FEATURES**

Target	Kappa light chain	Source / Host	Mouse
Reactivity	Human	Clonality	Monoclonal
Applications	WB, IHC	Conjugation	Unconjugated
Form / Buffer	Mouse IgG1 kappa. Liquid in PBS, and 0.01% sodium azide.	Storage	at-20°C

**BACKGROUND**

Constant region of immunoglobulin light chains. Immunoglobulins, also known as antibodies, are membrane-bound or secreted glycoproteins produced by B lymphocytes. In the recognition phase of humoral immunity, the membrane-bound immunoglobulins serve as receptors which, upon binding of a specific antigen, trigger the clonal expansion and differentiation of B lymphocytes into immunoglobulins-secreting plasma cells. Secreted immunoglobulins mediate the effector phase of humoral immunity, which results in the elimination of bound antigens. The antigen binding site is formed by the variable domain of one heavy chain, together with that of its associated light chain. Thus, each immunoglobulin has two antigen binding sites with remarkable affinity for a particular antigen.

**APPLICATION**

To ensure optimal assay performance, AREX recommends conducting reagent titration tailored to each testing system for optimal detection results.

WB	1:500 - 1:1000
IHC	1:100 - 1:200

\*Results are sample-specific. Please refer to your local assay conditions and test parameters for reference.

**PRODUCT OVERVIEW**

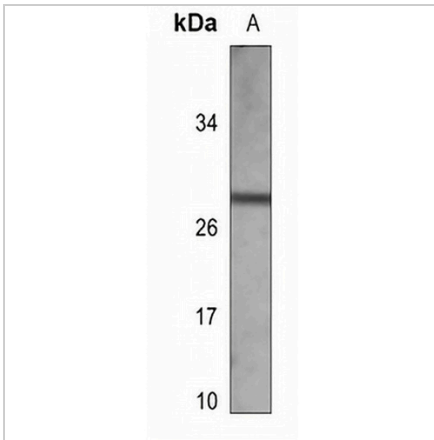
Description	Mouse monoclonal antibody to Kappa light chain protein
Specificity	Recognizes endogenous levels of Kappa light chain protein.
Antibody Type	Primary antibody
Immunogen	This antibody is generated from mouse immunized with Kappa light chain recombinant protein.
Purification	This antibody is purified through a protein G column.
Molecular Weight	Predicted: 11 kD; Observed: 27 kD
Form/Buffer	Mouse IgG1 kappa. Liquid in PBS, and 0.01% sodium azide.
Alternative Names	Immunoglobulin kappa constant; Ig kappa chain C region; Ig kappa chain C region AG; Ig kappa chain C region CUM; Ig kappa chain C region EU; Ig kappa chain C region OU; Ig kappa chain C region ROY; Ig kappa chain C region TI
Gene Symbol	IGKC
Entrez Gene	3514(Human)
SwissProt	P01834(Human)

\*AREX continuously optimizes our products. Webpage content may not reflect the latest updates. For inquiries, please contact [info@arexbio.com](mailto:info@arexbio.com) or your local distributor.

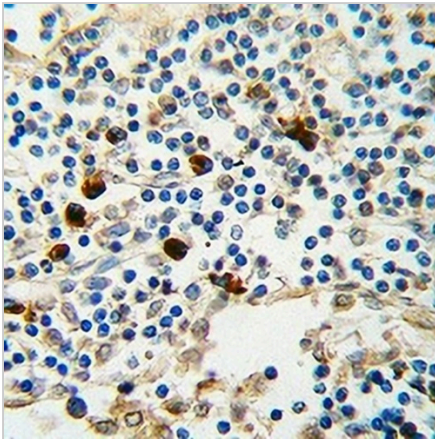
\*Clone Number, Reactivity, Source/Host and Clonality can be found in the product name and Key Features section above.

**DATASHEET****Kappa light chain Mouse Monoclonal Antibody(C3507)**

CAT. NO. AMA03119

**DATA**

Western blot analysis of Kappa light chain expression in human serum (A) whole cell lysates. (Predicted band size: 11 kD; Observed band size: 27 kD)



Immunohistochemical analysis of Kappa light chain staining in human lymph formalin fixed paraffin embedded tissue section. The section was pre-treated using heat mediated antigen retrieval with sodium citrate buffer (pH 6.0). The section was then incubated with the antibody at room temperature and detected using an HRP conjugated compact polymer system. DAB was used as the chromogen. The section was then counterstained with haematoxylin and mounted with DPX.

**STORAGE**

Store at 4°C short term. For long term storage, store at -20°C, avoiding freeze/thaw cycles.

**NOTE**

For Research Use Only. Not for diagnostic, therapeutics, prophylactic or in vivo use.