

DATASHEET

Lambda light chain Mouse Monoclonal Antibody(C3508)

CAT. NO. AMA03120

KEY FEATURES

Target	Lambda light chain	Source / Host	Mouse
Reactivity	Human	Clonality	Monoclonal
Applications	WB, IHC	Conjugation	Unconjugated
Form / Buffer	Mouse IgG2a kappa. Liquid in PBS, and 0.01% sodium azide.	Storage	at-20°C

BACKGROUND

V region of the variable domain of immunoglobulin light chains that participates in the antigen recognition . Immunoglobulins, also known as antibodies, are membrane-bound or secreted glycoproteins produced by B lymphocytes. In the recognition phase of humoral immunity, the membrane-bound immunoglobulins serve as receptors which, upon binding of a specific antigen, trigger the clonal expansion and differentiation of B lymphocytes into immunoglobulins-secreting plasma cells. Secreted immunoglobulins mediate the effector phase of humoral immunity, which results in the elimination of bound antigens . The antigen binding site is formed by the variable domain of one heavy chain, together with that of its associated light chain.

APPLICATION

To ensure optimal assay performance, AREX recommends conducting reagent titration tailored to each testing system for optimal detection results.

WB	1:500 - 1:1000
IHC	1:20 - 1:50

*Results are sample-specific. Please refer to your local assay conditions and test parameters for reference.

PRODUCT OVERVIEW

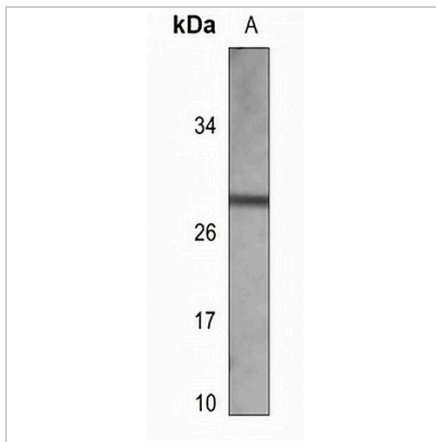
Description	Mouse monoclonal antibody to Lambda light chain protein
Specificity	Recognizes endogenous levels of Lambda light chain protein.
Antibody Type	Primary antibody
Immunogen	This antibody is generated from mouse immunized with Lambda light chain recombinant protein.
Purification	This antibody is purified through a protein G column.
Molecular Weight	Predicted: 12 kD; Observed: 27 kD
Form/Buffer	Mouse IgG2a kappa. Liquid in PBS, and 0.01% sodium azide.
Alternative Names	Immunoglobulin lambda variable 1-51; Ig lambda chain V-I region BL2; Ig lambda chain V-I region EPS; Ig lambda chain V-I region NEW; Ig lambda chain V-I region NIG-64
Gene Symbol	IGLV1-51
Entrez Gene	28820(Human)
SwissProt	P01701(Human)

*AREX continuously optimizes our products. Webpage content may not reflect the latest updates. For inquiries, please contact info@arexbio.com or your local distributor.

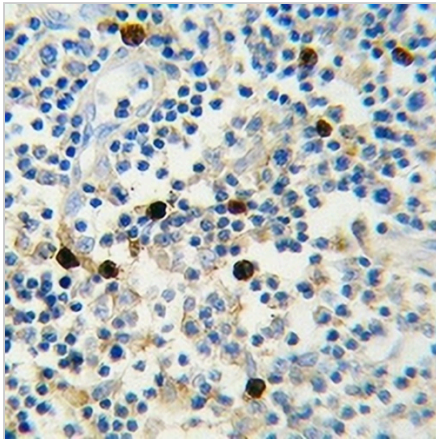
*Clone Number, Reactivity, Source/Host and Clonality can be found in the product name and Key Features section above.

DATASHEET**Lambda light chain Mouse Monoclonal Antibody(C3508)**

CAT. NO. AMA03120

DATA

Western blot analysis of Lambda light chain expression in Ramos (A) whole cell lysates. (Predicted band size: 12 kD; Observed band size: 27 kD)



Immunohistochemical analysis of Lambda light chain staining in human lymph formalin fixed paraffin embedded tissue section. The section was pre-treated using heat mediated antigen retrieval with sodium citrate buffer (pH 6.0). The section was then incubated with the antibody at room temperature and detected using an HRP conjugated compact polymer system. DAB was used as the chromogen. The section was then counterstained with haematoxylin and mounted with DPX.

STORAGE

Store at 4°C short term. For long term storage, store at -20°C, avoiding freeze/thaw cycles.

NOTE

For Research Use Only. Not for diagnostic, therapeutics, prophylactic or in vivo use.