

**DATASHEET**

**CHK1 Mouse Monoclonal Antibody(C3515)**

CAT. NO. AMA03127

**KEY FEATURES**

Target	CHK1	Source / Host	Mouse
Reactivity	Human, Mouse	Clonality	Monoclonal
Applications	WB	Conjugation	Unconjugated
Form / Buffer	Mouse IgM. Liquid in PBS, pH 7.3, 30% glycerol, and 0.01% sodium azide.	Storage	at-20°C

**BACKGROUND**

Serine/threonine-protein kinase which is required for checkpoint-mediated cell cycle arrest and activation of DNA repair in response to the presence of DNA damage or unreplicated DNA . May also negatively regulate cell cycle progression during unperturbed cell cycles . This regulation is achieved by a number of mechanisms that together help to preserve the integrity of the genome . Recognizes the substrate consensus sequence [R-X-X-S/T] . Binds to and phosphorylates CDC25A, CDC25B and CDC25C . Phosphorylation of CDC25A at 'Ser-178' and 'Thr-507' and phosphorylation of CDC25C at 'Ser-216' creates binding sites for 14-3-3 proteins which inhibit CDC25A and CDC25C . Phosphorylation of CDC25A at 'Ser-76', 'Ser-124', 'Ser-178', 'Ser-279' and 'Ser-293' promotes proteolysis of CDC25A .

**APPLICATION**

To ensure optimal assay performance, AREX recommends conducting reagent titration tailored to each testing system for optimal detection results.

WB	1:500 - 1:1000
----	----------------

\*Results are sample-specific. Please refer to your local assay conditions and test parameters for reference.

**PRODUCT OVERVIEW**

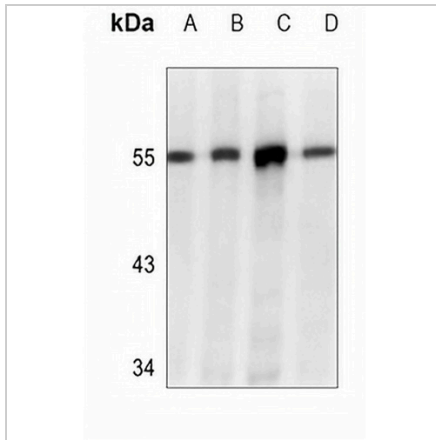
Description	Mouse monoclonal antibody to CHK1
Specificity	Recognizes endogenous levels of CHK1 protein.
Antibody Type	Primary antibody
Immunogen	Recombinant fusion protein of human CHK1. The exact sequence is proprietary.
Purification	This antibody is purified through a protein G column.
Molecular Weight	Predicted: 54 kD; Observed: 54 kD
Form/Buffer	Mouse IgM. Liquid in PBS, pH 7.3, 30% glycerol, and 0.01% sodium azide.
Alternative Names	CHK1; Serine/threonine-protein kinase Chk1; CHK1 checkpoint homolog; Cell cycle checkpoint kinase; Checkpoint kinase-1
Gene Symbol	CHEK1
Entrez Gene	1111(Human); 12649(Mouse)
SwissProt	O14757(Human); O35280(Mouse)

\*AREX continuously optimizes our products. Webpage content may not reflect the latest updates. For inquiries, please contact [info@arexbio.com](mailto:info@arexbio.com) or your local distributor.

\*Clone Number, Reactivity, Source/Host and Clonality can be found in the product name and Key Features section above.

**DATASHEET****CHK1 Mouse Monoclonal Antibody(C3515)**

CAT. NO. AMA03127

**DATA**

Western blot analysis of CHK1 expression in A431 (A), HeLa (B), Jurkat (C), K562 (D), MCF7 (E) whole cell lysates. (Predicted band size: 54 kD; Observed band size: 54 kD)

**STORAGE**

Store at 4°C short term. For long term storage, store at -20°C, avoiding freeze/thaw cycles.

**NOTE**

For Research Use Only. Not for diagnostic, therapeutics, prophylactic or in vivo use.