

## DATASHEET

# RAB7L1 Mouse Monoclonal Antibody(C3517)

CAT. NO. AMA03129

### KEY FEATURES

Target	RAB7L1	Source / Host	Mouse
Reactivity	Human	Clonality	Monoclonal
Applications	WB	Conjugation	Unconjugated
Form / Buffer	Mouse IgG1 kappa. Liquid in PBS, pH 7.3, 30% glycerol, and 0.01% sodium azide.	Storage	at-20°C

### BACKGROUND

The small GTPases Rab are key regulators of intracellular membrane trafficking, from the formation of transport vesicles to their fusion with membranes. Rabs cycle between an inactive GDP-bound form and an active GTP-bound form that is able to recruit to membranes different sets of downstream effectors directly responsible for vesicle formation, movement, tethering and fusion. RAB29 is essential for maintaining the integrity of the endosome-trans-Golgi network structure. Together with LRRK2, plays a role in the retrograde trafficking pathway for recycling proteins, such as mannose 6 phosphate receptor (M6PR), between lysosomes and the Golgi apparatus in a retromer-dependent manner. Recruits LRRK2 to the Golgi complex and stimulates LRRK2 kinase activity.

### APPLICATION

To ensure optimal assay performance, AREX recommends conducting reagent titration tailored to each testing system for optimal detection results.

WB	1:500 - 1:1000
----	----------------

\*Results are sample-specific. Please refer to your local assay conditions and test parameters for reference.

### PRODUCT OVERVIEW

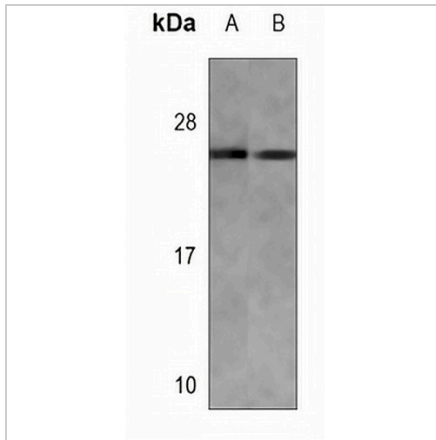
Description	Mouse monoclonal antibody to RAB7L1
Specificity	Recognizes endogenous levels of RAB7L1 protein.
Antibody Type	Primary antibody
Immunogen	Recombinant fusion protein of human RAB7L1. The exact sequence is proprietary.
Purification	This antibody is purified through a protein G column.
Molecular Weight	Predicted: 23 kD; Observed: 23 kD
Form/Buffer	Mouse IgG1 kappa. Liquid in PBS, pH 7.3, 30% glycerol, and 0.01% sodium azide.
Alternative Names	Ras-related protein Rab-7L1; Rab-7-like protein 1
Gene Symbol	RAB7L1
Entrez Gene	8934(Human)
SwissProt	O14966(Human)

\*AREX continuously optimizes our products. Webpage content may not reflect the latest updates. For inquiries, please contact [info@arexbio.com](mailto:info@arexbio.com) or your local distributor.

\*Clone Number, Reactivity, Source/Host and Clonality can be found in the product name and Key Features section above.

**DATASHEET****RAB7L1 Mouse Monoclonal Antibody(C3517)**

CAT. NO. AMA03129

**DATA**

Western blot analysis of RAB7L1 expression in Jurkat (A), A431 (B) whole cell lysates. (Predicted band size: 23 kD; Observed band size: 23 kD)

**STORAGE**

Store at 4°C short term. For long term storage, store at -20°C, avoiding freeze/thaw cycles.

**NOTE**

For Research Use Only. Not for diagnostic, therapeutics, prophylactic or in vivo use.