

DATASHEET

GMFG Mouse Monoclonal Antibody(C3527)

CAT. NO. AMA03139

KEY FEATURES

Target	GMFG	Source / Host	Mouse
Reactivity	Human	Clonality	Monoclonal
Applications	WB	Conjugation	Unconjugated
Form / Buffer	Mouse IgG1. Supplied in crude ascites with 0.01% sodium azide.	Storage	at-20°C

BACKGROUND

Glia maturation factor gamma (GMFG). Belongs to the actin-binding proteins ADF family. GMF subfamily Tissue specificity: Expressed predominantly in lung, heart and placenta

APPLICATION

To ensure optimal assay performance, AREX recommends conducting reagent titration tailored to each testing system for optimal detection results.

WB	1:2000 - 1:10000
----	------------------

*Results are sample-specific. Please refer to your local assay conditions and test parameters for reference.

PRODUCT OVERVIEW

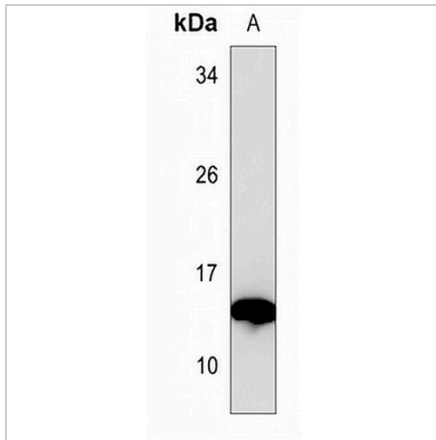
Description	Mouse monoclonal antibody to GMFG
Specificity	Recognizes endogenous levels of GMFG protein.
Antibody Type	Primary antibody
Immunogen	Recombinant fusion protein of human GMFG. The exact sequence is proprietary.
Molecular Weight	Predicted: 16 kD; Observed: 16 kD
Form/Buffer	Mouse IgG1. Supplied in crude ascites with 0.01% sodium azide.
Alternative Names	Glia maturation factor gamma; GMF-gamma
Gene Symbol	GMFG
Entrez Gene	9535(Human)
SwissProt	O60234(Human)

*AREX continuously optimizes our products. Webpage content may not reflect the latest updates. For inquiries, please contact info@arexbio.com or your local distributor.

*Clone Number, Reactivity, Source/Host and Clonality can be found in the product name and Key Features section above.

DATASHEET**GMFG Mouse Monoclonal Antibody(C3527)**

CAT. NO. AMA03139

DATA

Western blot analysis of GMFG expression in Jurkat (A) whole cell lysates. (Predicted band size: 16 kD; Observed band size: 16 kD)

STORAGE

Store at 4°C short term. For long term storage, store at -20°C, avoiding freeze/thaw cycles.

NOTE

For Research Use Only. Not for diagnostic, therapeutics, prophylactic or in vivo use.