

DATASHEET

Nephrin Mouse Monoclonal Antibody(C3529)

CAT. NO. AMA03141

KEY FEATURES

Target	Nephrin	Source / Host	Mouse
Reactivity	Human	Clonality	Monoclonal
Applications	WB	Conjugation	Unconjugated
Form / Buffer	Mouse IgM kappa. Liquid in PBS, pH 7.3, 30% glycerol, and 0.01% sodium azide.	Storage	at-20°C

BACKGROUND

Seems to play a role in the development or function of the kidney glomerular filtration barrier. Regulates glomerular vascular permeability. May anchor the podocyte slit diaphragm to the actin cytoskeleton. Plays a role in skeletal muscle formation through regulation of myoblast fusion .

APPLICATION

To ensure optimal assay performance, AREX recommends conducting reagent titration tailored to each testing system for optimal detection results.

WB	1:500 - 1:1000
----	----------------

*Results are sample-specific. Please refer to your local assay conditions and test parameters for reference.

PRODUCT OVERVIEW

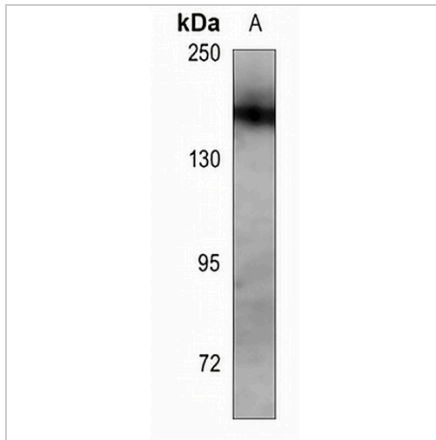
Description	Mouse monoclonal antibody to Nephrin
Specificity	Recognizes endogenous levels of Nephrin protein.
Antibody Type	Primary antibody
Immunogen	Recombinant fusion protein of human Nephrin. The exact sequence is proprietary.
Purification	This antibody is purified through a protein G column.
Molecular Weight	Predicted: 134 kD; Observed: 180 kD
Form/Buffer	Mouse IgM kappa. Liquid in PBS, pH 7.3, 30% glycerol, and 0.01% sodium azide.
Alternative Names	NPHN; Nephrin; Renal glomerulus-specific cell adhesion receptor
Gene Symbol	NPHS1
Entrez Gene	4868(Human)
SwissProt	O60500(Human)

*AREX continuously optimizes our products. Webpage content may not reflect the latest updates. For inquiries, please contact info@arexbio.com or your local distributor.

*Clone Number, Reactivity, Source/Host and Clonality can be found in the product name and Key Features section above.

DATASHEET**Nephrin Mouse Monoclonal Antibody(C3529)**

CAT. NO. AMA03141

DATA

Western blot analysis of Nephrin expression in HepG2 (A) whole cell lysates. (Predicted band size: 134 kD; Observed band size: 180 kD)

STORAGE

Store at 4°C short term. For long term storage, store at -20°C, avoiding freeze/thaw cycles.

NOTE

For Research Use Only. Not for diagnostic, therapeutics, prophylactic or in vivo use.