

DATASHEET

TIP47 Mouse Monoclonal Antibody(C3533)

CAT. NO. AMA03145

KEY FEATURES

Target	TIP47	Source / Host	Mouse
Reactivity	Human	Clonality	Monoclonal
Applications	WB, FC	Conjugation	Unconjugated
Form / Buffer	Mouse IgG2a kappa. Liquid in PBS, pH 7.3, 30% glycerol, and 0.01% sodium azide.	Storage	at-20°C

BACKGROUND

Structural component of lipid droplets, which is required for the formation and maintenance of lipid storage droplets . Required for the transport of mannose 6-phosphate receptors (MPR) from endosomes to the trans-Golgi network .

APPLICATION

To ensure optimal assay performance, AREX recommends conducting reagent titration tailored to each testing system for optimal detection results.

WB	1:500 - 1:1000
FC	1:10 - 1:50

*Results are sample-specific. Please refer to your local assay conditions and test parameters for reference.

PRODUCT OVERVIEW

Description	Mouse monoclonal antibody to TIP47
Specificity	Recognizes endogenous levels of TIP47 protein.
Antibody Type	Primary antibody
Immunogen	KLH-conjugated synthetic peptide of human TIP47. The exact sequence is proprietary.
Purification	This antibody is purified through a protein G column.
Molecular Weight	Predicted: 47 kD; Observed: 47 kD
Form/Buffer	Mouse IgG2a kappa. Liquid in PBS, pH 7.3, 30% glycerol, and 0.01% sodium azide.
Alternative Names	M6PRBP1; TIP47; Perilipin-3; 47 kDa mannose 6-phosphate receptor-binding protein; 47 kDa MPR-binding protein; Cargo selection protein TIP47; Mannose-6-phosphate receptor-binding protein 1; Placental protein 17; PP17
Gene Symbol	PLIN3
Entrez Gene	10226(Human)
SwissProt	O60664(Human)

*AREX continuously optimizes our products. Webpage content may not reflect the latest updates. For inquiries, please contact info@arexbio.com or your local distributor.

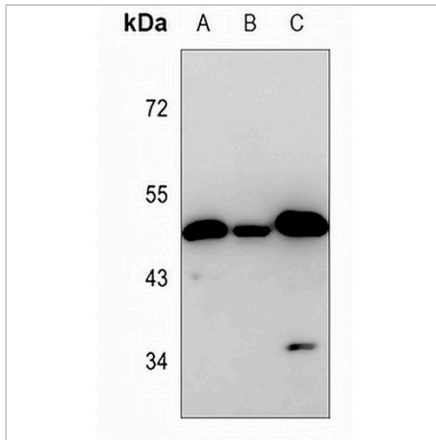
*Clone Number, Reactivity, Source/Host and Clonality can be found in the product name and Key Features section above.

DATASHEET

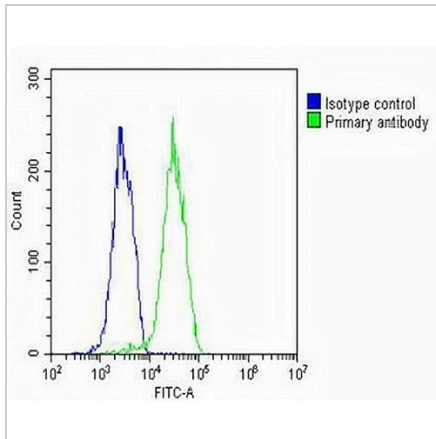
TIP47 Mouse Monoclonal Antibody(C3533)

CAT. NO. AMA03145

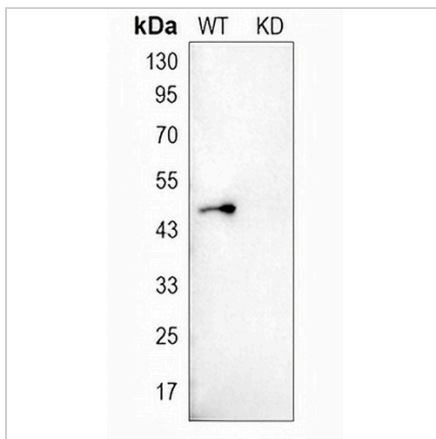
DATA



Western blot analysis of TIP47 expression in HeLa (A), K562 (B), Daudi (C) whole cell lysates. (Predicted band size: 47 kD; Observed band size: 47 kD)



Flow cytometric analysis of HUVEC cells using Anti-TIP47 Antibody. The cells were fixed with 2% paraformaldehyde (10 min) and then permeabilized with 90% methanol for 10 min. The cells were incubated in 2% bovine serum albumin to block non-specific protein-protein interactions followed by the antibody at 37 °C for 60 min. The secondary antibody Goat Anti-Mouse IgG (H&L) - AREX® Fluor 488 was incubated at 37 °C for 40 min. Isotype control antibody (blue line) was used under the same condition.



Western blot analysis of TIP47 expression in wild type (WT) and knockdown (KD) HeLa cell lysates.

STORAGE

Store at 4°C short term. For long term storage, store at -20°C, avoiding freeze/thaw cycles.

NOTE

For Research Use Only. Not for diagnostic, therapeutics, prophylactic or in vivo use.