

**DATASHEET**

**ATG7 Mouse Monoclonal Antibody(C3544)**

CAT. NO. AMA03156

**KEY FEATURES**

Target	ATG7	Source / Host	Mouse
Reactivity	Human	Clonality	Monoclonal
Applications	WB	Conjugation	Unconjugated
Form / Buffer	Mouse IgG2b kappa. Supplied in crude ascites with 0.01% sodium azide.	Storage	at-20°C

**BACKGROUND**

E1-like activating enzyme involved in the 2 ubiquitin-like systems required for cytoplasm to vacuole transport (Cvt) and autophagy. Activates ATG12 for its conjugation with ATG5 as well as the ATG8 family proteins for their conjugation with phosphatidylethanolamine. Both systems are needed for the ATG8 association to Cvt vesicles and autophagosomes membranes. Required for autophagic death induced by caspase-8 inhibition. Facilitates LC3-I lipidation with phosphatidylethanolamine to form LC3-II which is found on autophagosomal membranes and autophagy. Activates ATG12 for its conjugation with ATG5 as well as the ATG8 family proteins for their conjugation with phosphatidylethanolamine. Both systems are needed for the ATG8 association to Cvt vesicles and autophagosomes membranes.

**APPLICATION**

To ensure optimal assay performance, AREX recommends conducting reagent titration tailored to each testing system for optimal detection results.

WB	1:500 - 1:1000
----	----------------

\*Results are sample-specific. Please refer to your local assay conditions and test parameters for reference.

**PRODUCT OVERVIEW**

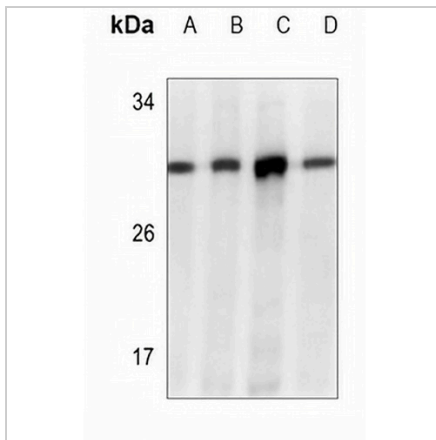
Description	Mouse monoclonal antibody to ATG7
Specificity	Recognizes endogenous levels of ATG7 protein.
Antibody Type	Primary antibody
Immunogen	Recombinant fusion protein of human ATG7. The exact sequence is proprietary.
Molecular Weight	Predicted: 77 kD; Observed: 30 kD
Form/Buffer	Mouse IgG2b kappa. Supplied in crude ascites with 0.01% sodium azide.
Alternative Names	APG7L; Ubiquitin-like modifier-activating enzyme ATG7; ATG12-activating enzyme E1 ATG7; Autophagy-related protein 7; APG7-like; hAGP7; Ubiquitin-activating enzyme E1-like protein
Gene Symbol	ATG7
Entrez Gene	10533(Human)
SwissProt	O95352(Human)

\*AREX continuously optimizes our products. Webpage content may not reflect the latest updates. For inquiries, please contact [info@arexbio.com](mailto:info@arexbio.com) or your local distributor.

\*Clone Number, Reactivity, Source/Host and Clonality can be found in the product name and Key Features section above.

**DATASHEET****ATG7 Mouse Monoclonal Antibody(C3544)**

CAT. NO. AMA03156

**DATA**

Western blot analysis of ATG7 expression in recombinant APG7 protein (A) whole cell lysates. (Predicted band size: 77 kD; Observed band size: 30 kD)

**STORAGE**

Store at 4°C short term. For long term storage, store at -20°C, avoiding freeze/thaw cycles.

**NOTE**

For Research Use Only. Not for diagnostic, therapeutics, prophylactic or in vivo use.