

## DATASHEET

# Complement C3 Mouse Monoclonal Antibody(C3558)

CAT. NO. AMA03170

### KEY FEATURES

|               |  |               |              |
|---------------|--|---------------|--------------|
| Target        | Complement C3  | Source / Host | Mouse        |
| Reactivity    | Human  | Clonality     | Monoclonal   |
| Applications  | WB   | Conjugation   | Unconjugated |
| Form / Buffer | Mouse IgG1. Supplied in crude ascites with 0.01% sodium azide. | Storage       | at-20°C      |

### BACKGROUND

Precursor of non-enzymatic components of the classical, alternative, lectin and GZMK complement pathways, which consist in a cascade of proteins that leads to phagocytosis and breakdown of pathogens and signaling that strengthens the adaptive immune system.

### APPLICATION

To ensure optimal assay performance, AREX recommends conducting reagent titration tailored to each testing system for optimal detection results.

|    |                |
|----|----------------|
| WB | 1:500 - 1:1000 |
|----|----------------|

\*Results are sample-specific. Please refer to your local assay conditions and test parameters for reference.

### PRODUCT OVERVIEW

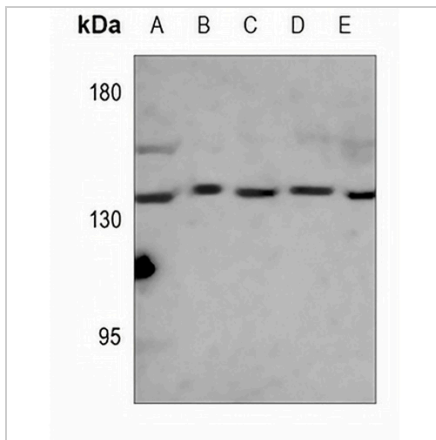
|                   |  |
|-------------------|--|
| Description       | Mouse monoclonal antibody to Complement C3   |
| Specificity       | Recognizes endogenous levels of Complement C3 protein.   |
| Antibody Type     | Primary antibody   |
| Immunogen         | KLH-conjugated synthetic peptide encompassing a sequence within the C-term region of human Complement C3. The exact sequence is proprietary. |
| Molecular Weight  | Predicted: 187 kD; Observed: 135 kD  |
| Form/Buffer       | Mouse IgG1. Supplied in crude ascites with 0.01% sodium azide.   |
| Alternative Names | CPAMD1; Complement C3; C3 and PZP-like alpha-2-macroglobulin domain-containing protein 1   |
| Gene Symbol       | C3   |
| Entrez Gene       | 718(Human)   |
| SwissProt         | P01024(Human)  |

\*AREX continuously optimizes our products. Webpage content may not reflect the latest updates. For inquiries, please contact [info@arexbio.com](mailto:info@arexbio.com) or your local distributor.

\*Clone Number, Reactivity, Source/Host and Clonality can be found in the product name and Key Features section above.

**DATASHEET****Complement C3 Mouse Monoclonal Antibody(C3558)**

CAT. NO. AMA03170

**DATA**

Western blot analysis of Complement C3 expression in Hela (A), HepG2 (B), K562 (C), CCRFCEM (D), MDAMB453 (E) whole cell lysates. (Predicted band size: 187 kD; Observed band size: 135 kD)

**STORAGE**

Store at 4°C short term. For long term storage, store at -20°C, avoiding freeze/thaw cycles.

**NOTE**

For Research Use Only. Not for diagnostic, therapeutics, prophylactic or in vivo use.