

**DATASHEET**

**Cystatin C Mouse Monoclonal Antibody(C3559)**

CAT. NO. AMA03171

**KEY FEATURES**

Target	Cystatin C	Source / Host	Mouse
Reactivity	Human	Clonality	Monoclonal
Applications	WB	Conjugation	Unconjugated
Form / Buffer	Mouse IgG1. Supplied in crude ascites with 0.01% sodium azide.	Storage	at-20°C

**BACKGROUND**

As an inhibitor of cysteine proteinases, this protein is thought to serve an important physiological role as a local regulator of this enzyme activity.

**APPLICATION**

To ensure optimal assay performance, AREX recommends conducting reagent titration tailored to each testing system for optimal detection results.

WB	1:500 - 1:1000
----	----------------

\*Results are sample-specific. Please refer to your local assay conditions and test parameters for reference.

**PRODUCT OVERVIEW**

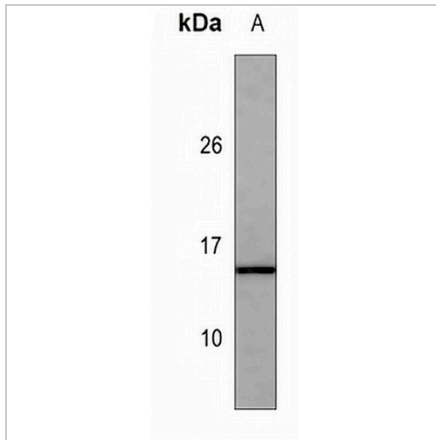
Description	Mouse monoclonal antibody to Cystatin C
Specificity	Recognizes endogenous levels of Cystatin C protein.
Antibody Type	Primary antibody
Immunogen	KLH-conjugated synthetic peptide encompassing a sequence within the center region of human Cystatin C. The exact sequence is proprietary.
Molecular Weight	Predicted: 15 kD; Observed: 15 kD
Form/Buffer	Mouse IgG1. Supplied in crude ascites with 0.01% sodium azide.
Alternative Names	Cystatin-C; Cystatin-3; Gamma-trace; Neuroendocrine basic polypeptide; Post-gamma-globulin
Gene Symbol	CST3
Entrez Gene	1471(Human)
SwissProt	P01034(Human)

\*AREX continuously optimizes our products. Webpage content may not reflect the latest updates. For inquiries, please contact [info@arexbio.com](mailto:info@arexbio.com) or your local distributor.

\*Clone Number, Reactivity, Source/Host and Clonality can be found in the product name and Key Features section above.

**DATASHEET****Cystatin C Mouse Monoclonal Antibody(C3559)**

CAT. NO. AMA03171

**DATA**

Western blot analysis of Cystatin C expression in 293 (A) whole cell lysates. (Predicted band size: 15 kD; Observed band size: 15 kD)

**STORAGE**

Store at 4°C short term. For long term storage, store at -20°C, avoiding freeze/thaw cycles.

**NOTE**

For Research Use Only. Not for diagnostic, therapeutics, prophylactic or in vivo use.