

## DATASHEET

# Gastrin Mouse Monoclonal Antibody(C3566)

CAT. NO. AMA03178

### KEY FEATURES

|               |  |               |              |
|---------------|--|---------------|--------------|
| Target        | Gastrin  | Source / Host | Mouse        |
| Reactivity    | Human  | Clonality     | Monoclonal   |
| Applications  | WB   | Conjugation   | Unconjugated |
| Form / Buffer | Mouse IgG1. Supplied in crude ascites with 0.01% sodium azide. | Storage       | at-20°C      |

### BACKGROUND

Gastrin stimulates the stomach mucosa to produce and secrete hydrochloric acid and the pancreas to secrete its digestive enzymes. It also stimulates smooth muscle contraction and increases blood circulation and water secretion in the stomach and intestine.

### APPLICATION

To ensure optimal assay performance, AREX recommends conducting reagent titration tailored to each testing system for optimal detection results.

|    |                |
|----|----------------|
| WB | 1:500 - 1:1000 |
|----|----------------|

\*Results are sample-specific. Please refer to your local assay conditions and test parameters for reference.

### PRODUCT OVERVIEW

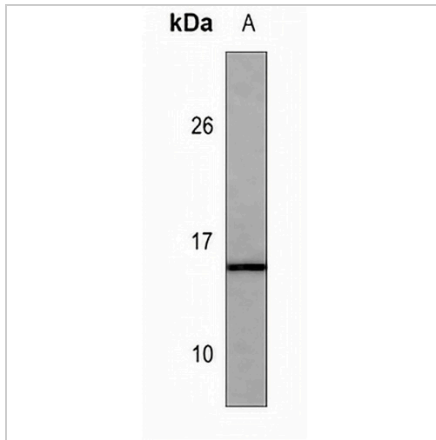
|                   |  |
|-------------------|--|
| Description       | Mouse monoclonal antibody to Gastrin   |
| Specificity       | Recognizes endogenous levels of Gastrin protein.   |
| Antibody Type     | Primary antibody   |
| Immunogen         | KLH-conjugated synthetic peptide encompassing a sequence within the center region of human Gastrin. The exact sequence is proprietary. |
| Molecular Weight  | Predicted: 11 kD; Observed: 16 kD  |
| Form/Buffer       | Mouse IgG1. Supplied in crude ascites with 0.01% sodium azide.   |
| Alternative Names | GAS; Gastrin   |
| Gene Symbol       | GAST   |
| Entrez Gene       | 2520(Human)  |
| SwissProt         | P01350(Human)  |

\*AREX continuously optimizes our products. Webpage content may not reflect the latest updates. For inquiries, please contact [info@arexbio.com](mailto:info@arexbio.com) or your local distributor.

\*Clone Number, Reactivity, Source/Host and Clonality can be found in the product name and Key Features section above.

**DATASHEET****Gastrin Mouse Monoclonal Antibody(C3566)**

CAT. NO. AMA03178

**DATA**

Western blot analysis of Gastrin expression in CEM (A) whole cell lysates. (Predicted band size: 11 kD; Observed band size: 16 kD)

**STORAGE**

Store at 4°C short term. For long term storage, store at -20°C, avoiding freeze/thaw cycles.

**NOTE**

For Research Use Only. Not for diagnostic, therapeutics, prophylactic or in vivo use.