

DATASHEET

IFN alpha 1 Mouse Monoclonal Antibody(C3567)

CAT. NO. AMA03179

KEY FEATURES

Target	IFN alpha 1	Source / Host	Mouse
Reactivity	Human	Clonality	Monoclonal
Applications	WB	Conjugation	Unconjugated
Form / Buffer	Mouse IgG1 kappa. Liquid in PBS, pH 7.3, 30% glycerol, and 0.01% sodium azide.	Storage	at-20°C

BACKGROUND

Produced by macrophages, IFN-alpha have antiviral activities. Interferon stimulates the production of two enzymes: a protein kinase and an oligoadenylate synthetase.

APPLICATION

To ensure optimal assay performance, AREX recommends conducting reagent titration tailored to each testing system for optimal detection results.

WB	1:500 - 1:1000
----	----------------

*Results are sample-specific. Please refer to your local assay conditions and test parameters for reference.

PRODUCT OVERVIEW

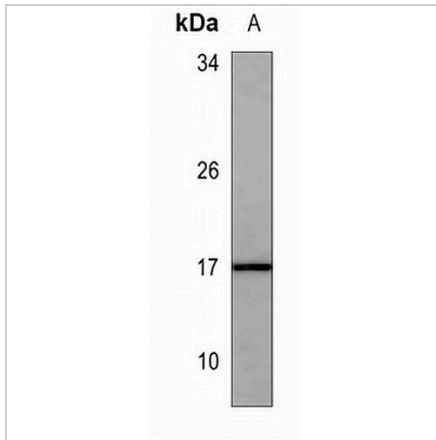
Description	Mouse monoclonal antibody to IFN alpha 1
Specificity	Recognizes endogenous levels of IFN alpha 1 protein.
Antibody Type	Primary antibody
Immunogen	Recombinant fusion protein of human IFN alpha 1. The exact sequence is proprietary.
Purification	This antibody is purified through a protein G column.
Molecular Weight	Predicted: 21 kD; Observed: 17 kD
Form/Buffer	Mouse IgG1 kappa. Liquid in PBS, pH 7.3, 30% glycerol, and 0.01% sodium azide.
Alternative Names	Interferon alpha-1/13; IFN-alpha-1/13; Interferon alpha-D; LeIF D
Gene Symbol	IFNA1; IFNA13
Entrez Gene	3439; 3447(Human)
SwissProt	P01562(Human)

*AREX continuously optimizes our products. Webpage content may not reflect the latest updates. For inquiries, please contact info@arexbio.com or your local distributor.

*Clone Number, Reactivity, Source/Host and Clonality can be found in the product name and Key Features section above.

DATASHEET**IFN alpha 1 Mouse Monoclonal Antibody(C3567)**

CAT. NO. AMA03179

DATA

Western blot analysis of IFN alpha 1 expression in IFN (A) whole cell lysates. (Predicted band size: 21 kD; Observed band size: 17 kD)

STORAGE

Store at 4°C short term. For long term storage, store at -20°C, avoiding freeze/thaw cycles.

NOTE

For Research Use Only. Not for diagnostic, therapeutics, prophylactic or in vivo use.