

**DATASHEET**

**EPO Mouse Monoclonal Antibody(C3570)**

CAT. NO. AMA03182

**KEY FEATURES**

|               |   |               |              |
|---------------|---|---------------|--------------|
| Target        | EPO   | Source / Host | Mouse        |
| Reactivity    | Human   | Clonality     | Monoclonal   |
| Applications  | WB  | Conjugation   | Unconjugated |
| Form / Buffer | Mouse IgM. Supplied in crude ascites with 0.01% sodium azide. | Storage       | at-20°C      |

**BACKGROUND**

Hormone involved in the regulation of erythrocyte proliferation and differentiation and the maintenance of a physiological level of circulating erythrocyte mass . Binds to EPOR leading to EPOR dimerization and JAK2 activation thereby activating specific downstream effectors, including STAT1 and STAT3 .

**APPLICATION**

To ensure optimal assay performance, AREX recommends conducting reagent titration tailored to each testing system for optimal detection results.

|    |                 |
|----|-----------------|
| WB | 1:1000 - 1:5000 |
|----|-----------------|

\*Results are sample-specific. Please refer to your local assay conditions and test parameters for reference.

**PRODUCT OVERVIEW**

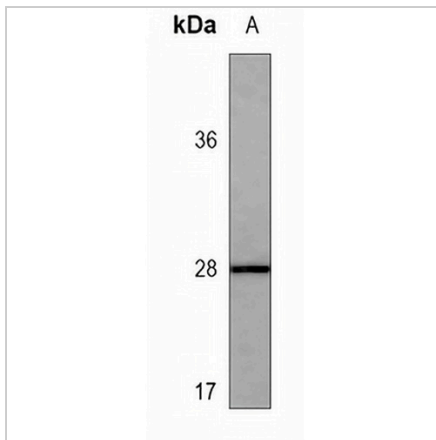
|                   |   |
|-------------------|---|
| Description       | Mouse monoclonal antibody to EPO  |
| Specificity       | Recognizes endogenous levels of EPO protein.                                |
| Antibody Type     | Primary antibody  |
| Immunogen         | Recombinant fusion protein of human EPO. The exact sequence is proprietary. |
| Molecular Weight  | Predicted: 21 kD; Observed: 28 kD   |
| Form/Buffer       | Mouse IgM. Supplied in crude ascites with 0.01% sodium azide.               |
| Alternative Names | Erythropoietin; Epoetin   |
| Gene Symbol       | EPO   |
| Entrez Gene       | 2056(Human)   |
| SwissProt         | P01588(Human)   |

\*AREX continuously optimizes our products. Webpage content may not reflect the latest updates. For inquiries, please contact [info@arexbio.com](mailto:info@arexbio.com) or your local distributor.

\*Clone Number, Reactivity, Source/Host and Clonality can be found in the product name and Key Features section above.

**DATASHEET****EPO Mouse Monoclonal Antibody(C3570)**

CAT. NO. AMA03182

**DATA**

Western blot analysis of EPO expression in CEM (A) whole cell lysates. (Predicted band size: 21 kD; Observed band size: 28 kD)

**STORAGE**

Store at 4°C short term. For long term storage, store at -20°C, avoiding freeze/thaw cycles.

**NOTE**

For Research Use Only. Not for diagnostic, therapeutics, prophylactic or in vivo use.