

DATASHEET

Alpha-crystallin B Mouse Monoclonal Antibody(C3575)

CAT. NO. AMA03187

KEY FEATURES

Target	Alpha-crystallin B	Source / Host	Mouse
Reactivity	Human, Mouse, Rat	Clonality	Monoclonal
Applications	WB	Conjugation	Unconjugated
Form / Buffer	Mouse IgG1 kappa. Liquid in PBS, pH 7.3, 30% glycerol, and 0.01% sodium azide.	Storage	at-20°C

BACKGROUND

May contribute to the transparency and refractive index of the lens. Has chaperone-like activity, preventing aggregation of various proteins under a wide range of stress conditions. In lens epithelial cells, stabilizes the ATP6V1A protein, preventing its degradation by the proteasome .

APPLICATION

To ensure optimal assay performance, AREX recommends conducting reagent titration tailored to each testing system for optimal detection results.

WB	1:500 - 1:1000
----	----------------

*Results are sample-specific. Please refer to your local assay conditions and test parameters for reference.

PRODUCT OVERVIEW

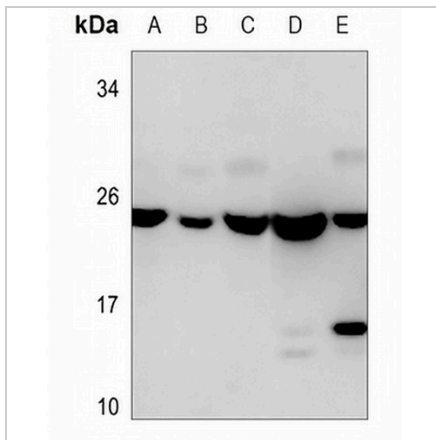
Description	Mouse monoclonal antibody to Alpha-crystallin B
Specificity	Recognizes endogenous levels of Alpha-crystallin B protein.
Antibody Type	Primary antibody
Immunogen	Recombinant fusion protein of human Alpha-crystallin B. The exact sequence is proprietary.
Purification	This antibody is purified through a protein G column.
Molecular Weight	Predicted: 20 kD; Observed: 25 kD
Form/Buffer	Mouse IgG1 kappa. Liquid in PBS, pH 7.3, 30% glycerol, and 0.01% sodium azide.
Alternative Names	CRYA2; Alpha-crystallin B chain; Alpha(B)-crystallin; Heat shock protein beta-5; HspB5; Renal carcinoma antigen NY-REN-27; Rosenthal fiber component
Gene Symbol	CRYAB
Entrez Gene	1410(Human); 12955(Mouse); 25420(Rat)
SwissProt	P02511(Human); P23927(Mouse); P23928(Rat)

*AREX continuously optimizes our products. Webpage content may not reflect the latest updates. For inquiries, please contact info@arexbio.com or your local distributor.

*Clone Number, Reactivity, Source/Host and Clonality can be found in the product name and Key Features section above.

DATASHEET**Alpha-crystallin B Mouse Monoclonal Antibody(C3575)**

CAT. NO. AMA03187

DATA

Western blot analysis of Alpha-crystallin B expression in U87 MG (A), MCF7 (B), mouse heart (C), skeletal muscle (D), rat skeletal muscle (E) whole cell lysates. (Predicted band size: 20 kD; Observed band size: 25 kD)

STORAGE

Store at 4°C short term. For long term storage, store at -20°C, avoiding freeze/thaw cycles.

NOTE

For Research Use Only. Not for diagnostic, therapeutics, prophylactic or in vivo use.