

DATASHEET

C-Reactive Protein Mouse Monoclonal Antibody(C3580)

CAT. NO. AMA03192

KEY FEATURES

| | | | |
|---------------|--|---------------|--------------|
| Target | C-Reactive Protein | Source / Host | Mouse |
| Reactivity | Human | Clonality | Monoclonal |
| Applications | WB | Conjugation | Unconjugated |
| Form / Buffer | Mouse IgG3. Liquid in PBS, pH 7.3, 30% glycerol, and 0.01% sodium azide. | Storage | at-20°C |

BACKGROUND

Displays several functions associated with host defense: it promotes agglutination, bacterial capsular swelling, phagocytosis and complement fixation through its calcium-dependent binding to phosphorylcholine. Can interact with DNA and histones and may scavenge nuclear material released from damaged circulating cells.

APPLICATION

To ensure optimal assay performance, AREX recommends conducting reagent titration tailored to each testing system for optimal detection results.

| | |
|----|----------------|
| WB | 1:500 - 1:1000 |
|----|----------------|

*Results are sample-specific. Please refer to your local assay conditions and test parameters for reference.

PRODUCT OVERVIEW

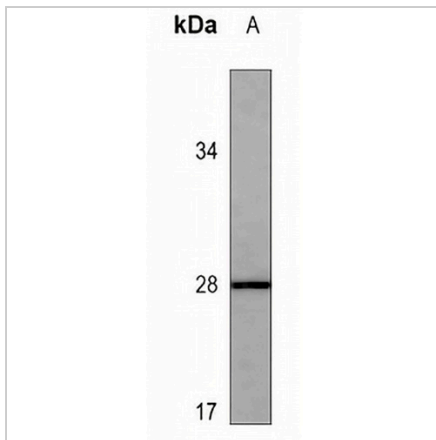
| | |
|-------------------|---|
| Description | Mouse monoclonal antibody to C-Reactive Protein |
| Specificity | Recognizes endogenous levels of C-Reactive Protein protein. |
| Antibody Type | Primary antibody |
| Immunogen | KLH-conjugated synthetic peptide encompassing a sequence within the N-term region of human C-Reactive Protein. The exact sequence is proprietary. |
| Purification | This antibody is purified through a protein G column. |
| Molecular Weight | Predicted: 25 kD; Observed: 28 kD |
| Form/Buffer | Mouse IgG3. Liquid in PBS, pH 7.3, 30% glycerol, and 0.01% sodium azide. |
| Alternative Names | PTX1; C-reactive protein |
| Gene Symbol | CRP |
| Entrez Gene | 1401(Human) |
| SwissProt | P02741(Human) |

*AREX continuously optimizes our products. Webpage content may not reflect the latest updates. For inquiries, please contact info@arexbio.com or your local distributor.

*Clone Number, Reactivity, Source/Host and Clonality can be found in the product name and Key Features section above.

DATASHEET**C-Reactive Protein Mouse Monoclonal Antibody(C3580)**

CAT. NO. AMA03192

DATA

Western blot analysis of C-Reactive Protein expression in NCIH460 (A) whole cell lysates.
(Predicted band size: 25 kD; Observed band size: 28 kD)

STORAGE

Store at 4°C short term. For long term storage, store at -20°C, avoiding freeze/thaw cycles.

NOTE

For Research Use Only. Not for diagnostic, therapeutics, prophylactic or in vivo use.