

**DATASHEET**

**HER2 Mouse Monoclonal Antibody(C3599)**

CAT. NO. AMA03211

**KEY FEATURES**

Target	HER2	Source / Host	Mouse
Reactivity	Human	Clonality	Monoclonal
Applications	WB	Conjugation	Unconjugated
Form / Buffer	Mouse IgG2b kappa. Liquid in PBS, pH 7.3, 30% glycerol, and 0.01% sodium azide.	Storage	at-20°C

**BACKGROUND**

Protein tyrosine kinase that is part of several cell surface receptor complexes, but that apparently needs a coreceptor for ligand binding. Essential component of a neuregulin-receptor complex, although neuregulins do not interact with it alone. GP30 is a potential ligand for this receptor. Regulates outgrowth and stabilization of peripheral microtubules (MTs). Upon ERBB2 activation, the MEMO1-RHOA-DIAPH1 signaling pathway elicits the phosphorylation and thus the inhibition of GSK3B at cell membrane. This prevents the phosphorylation of APC and CLASP2, allowing its association with the cell membrane. In turn, membrane-bound APC allows the localization of MACF1 to the cell membrane, which is required for microtubule capture and stabilization.

**APPLICATION**

To ensure optimal assay performance, AREX recommends conducting reagent titration tailored to each testing system for optimal detection results.

WB	1:500 - 1:1000
IHC	1:50 - 1:200

\*Results are sample-specific. Please refer to your local assay conditions and test parameters for reference.

**PRODUCT OVERVIEW**

Description	Mouse monoclonal antibody to HER2
Specificity	Recognizes endogenous levels of HER2 protein.
Antibody Type	Primary antibody
Immunogen	Recombinant fusion protein of human HER2. The exact sequence is proprietary.
Purification	This antibody is purified through a protein G column.
Molecular Weight	Predicted: 137 kD; Observed: 200 kD
Form/Buffer	Mouse IgG2b kappa. Liquid in PBS, pH 7.3, 30% glycerol, and 0.01% sodium azide.
Alternative Names	HER2; MLN19; NEU; NGL; Receptor tyrosine-protein kinase erbB-2; Metastatic lymph node gene 19 protein; MLN 19; Proto-oncogene Neu; Proto-oncogene c-ErbB-2; Tyrosine kinase-type cell surface receptor HER2; p185erbB2; CD340
Gene Symbol	ERBB2
Entrez Gene	2064(Human)
SwissProt	P04626(Human)

\*AREX continuously optimizes our products. Webpage content may not reflect the latest updates. For inquiries, please contact [info@arexbio.com](mailto:info@arexbio.com) or your local distributor.

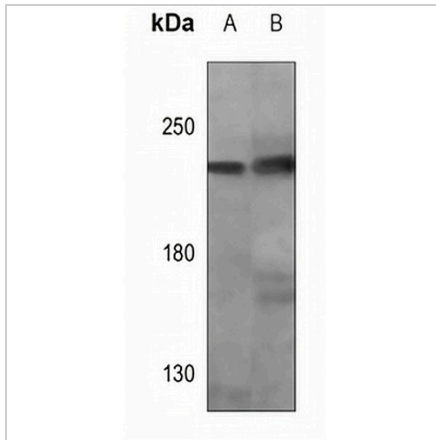
\*Clone Number, Reactivity, Source/Host and Clonality can be found in the product name and Key Features section above.

**DATASHEET**

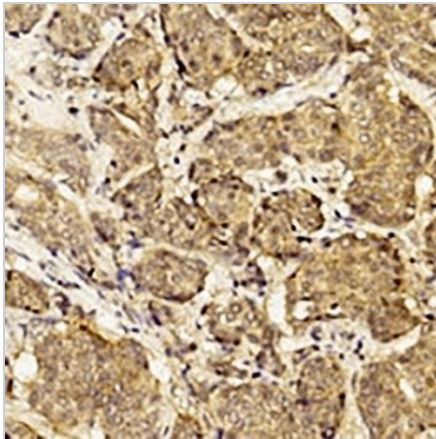
**HER2 Mouse Monoclonal Antibody(C3599)**

CAT. NO. AMA03211

**DATA**



Western blot analysis of HER2 expression in MDAMB453 (A), SKBR3 (B) whole cell lysates. (Predicted band size: 137 kD; Observed band size: 200 kD)



Immunohistochemical analysis of HER2 staining in human breast carcinoma formalin fixed paraffin embedded tissue section. The section was pre-treated using heat mediated antigen retrieval with sodium citrate buffer (pH 6.0). The section was then incubated with the antibody at room temperature and detected using an HRP conjugated compact polymer system. DAB was used as the chromogen. The section was then counterstained with haematoxylin and mounted with DPX.

**STORAGE**

Store at 4°C short term. For long term storage, store at -20°C, avoiding freeze/thaw cycles.

**NOTE**

For Research Use Only. Not for diagnostic, therapeutics, prophylactic or in vivo use.