

**DATASHEET**

**Cytochrome P450 1A1 Mouse Monoclonal Antibody(C3602)**

CAT. NO. AMA03214

**KEY FEATURES**

Target	Cytochrome P450 1A1	Source / Host	Mouse
Reactivity	Human	Clonality	Monoclonal
Applications	WB	Conjugation	Unconjugated
Form / Buffer	Mouse IgG1. Liquid in PBS, pH 7.3, 30% glycerol, and 0.01% sodium azide.	Storage	at-20°C

**BACKGROUND**

A cytochrome P450 monooxygenase involved in the metabolism of various endogenous substrates, including fatty acids, steroid hormones and vitamins . Mechanistically, uses molecular oxygen inserting one oxygen atom into a substrate, and reducing the second into a water molecule, with two electrons provided by NADPH via cytochrome P450 reductase (NADPH--hemoprotein reductase) . Catalyzes the hydroxylation of carbon-hydrogen bonds. Exhibits high catalytic activity for the formation of hydroxysteroids from estrone (E1) and 17beta-estradiol (E2), namely 2-hydroxy E1 and E2, as well as D-ring hydroxylated E1 and E2 at the C15-alpha and C16-alpha positions . Displays different regioselectivities for polyunsaturated fatty acids (PUFA) hydroxylation .

**APPLICATION**

To ensure optimal assay performance, AREX recommends conducting reagent titration tailored to each testing system for optimal detection results.

WB	1:500 - 1:1000
----	----------------

\*Results are sample-specific. Please refer to your local assay conditions and test parameters for reference.

**PRODUCT OVERVIEW**

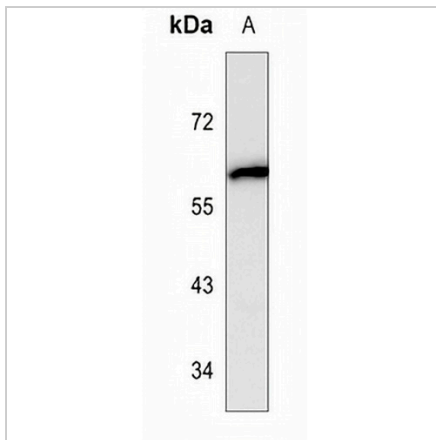
Description	Mouse monoclonal antibody to Cytochrome P450 1A1
Specificity	Recognizes endogenous levels of Cytochrome P450 1A1 protein.
Antibody Type	Primary antibody
Immunogen	KLH-conjugated synthetic peptide encompassing a sequence within the C-term region of human Cytochrome P450 1A1. The exact sequence is proprietary.
Purification	This antibody is purified through a protein G column.
Molecular Weight	Predicted: 58 kD; Observed: 60 kD
Form/Buffer	Mouse IgG1. Liquid in PBS, pH 7.3, 30% glycerol, and 0.01% sodium azide.
Alternative Names	Cytochrome P450 1A1; CYP1A1; Cytochrome P450 form 6; Cytochrome P450-C; Cytochrome P450-P1
Gene Symbol	CYP1A1
Entrez Gene	1543(Human)
SwissProt	P04798(Human)

\*AREX continuously optimizes our products. Webpage content may not reflect the latest updates. For inquiries, please contact [info@arexbio.com](mailto:info@arexbio.com) or your local distributor.

\*Clone Number, Reactivity, Source/Host and Clonality can be found in the product name and Key Features section above.

**DATASHEET****Cytochrome P450 1A1 Mouse Monoclonal Antibody(C3602)**

CAT. NO. AMA03214

**DATA**

Western blot analysis of Cytochrome P450 1A1 expression in Jurkat (A) whole cell lysates.  
(Predicted band size: 58 kD; Observed band size: 60 kD)

**STORAGE**

Store at 4°C short term. For long term storage, store at -20°C, avoiding freeze/thaw cycles.

**NOTE**

For Research Use Only. Not for diagnostic, therapeutics, prophylactic or in vivo use.