

DATASHEET

Cytochrome P450 1A2 Mouse Monoclonal Antibody(C3606)

CAT. NO. AMA03218

KEY FEATURES

Target	Cytochrome P450 1A2	Source / Host	Mouse
Reactivity	Human	Clonality	Monoclonal
Applications	WB	Conjugation	Unconjugated
Form / Buffer	Mouse IgG3. Liquid in PBS, pH 7.3, 30% glycerol, and 0.01% sodium azide.	Storage	at-20°C

BACKGROUND

A cytochrome P450 monooxygenase involved in the metabolism of various endogenous substrates, including fatty acids, steroid hormones and vitamins . Mechanistically, uses molecular oxygen inserting one oxygen atom into a substrate, and reducing the second into a water molecule, with two electrons provided by NADPH via cytochrome P450 reductase (NADPH--hemoprotein reductase) . Catalyzes the hydroxylation of carbon-hydrogen bonds . Exhibits high catalytic activity for the formation of hydroxysteroids from estrone (E1) and 17beta-estradiol (E2), namely 2-hydroxy E1 and E2 . Metabolizes cholesterol toward 25-hydroxycholesterol, a physiological regulator of cellular cholesterol homeostasis . May act as a major enzyme for all-trans retinoic acid biosynthesis in the liver.

APPLICATION

To ensure optimal assay performance, AREX recommends conducting reagent titration tailored to each testing system for optimal detection results.

WB	1:500 - 1:1000
----	----------------

*Results are sample-specific. Please refer to your local assay conditions and test parameters for reference.

PRODUCT OVERVIEW

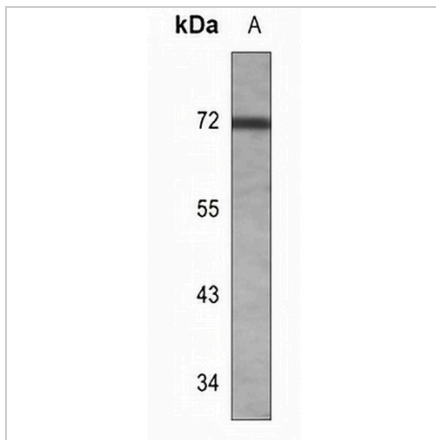
Description	Mouse monoclonal antibody to Cytochrome P450 1A2
Specificity	Recognizes endogenous levels of Cytochrome P450 1A2 protein.
Antibody Type	Primary antibody
Immunogen	KLH-conjugated synthetic peptide encompassing a sequence within the center region of human Cytochrome P450 1A2. The exact sequence is proprietary.
Purification	This antibody is purified through a protein G column.
Molecular Weight	Predicted: 58 kD; Observed: 72 kD
Form/Buffer	Mouse IgG3. Liquid in PBS, pH 7.3, 30% glycerol, and 0.01% sodium azide.
Alternative Names	Cytochrome P450 1A2; CYP1A2; Cytochrome P(3)450; Cytochrome P450 4; Cytochrome P450-P3
Gene Symbol	CYP1A2
Entrez Gene	1544(Human)
SwissProt	P05177(Human)

*AREX continuously optimizes our products. Webpage content may not reflect the latest updates. For inquiries, please contact info@arexbio.com or your local distributor.

*Clone Number, Reactivity, Source/Host and Clonality can be found in the product name and Key Features section above.

DATASHEET**Cytochrome P450 1A2 Mouse Monoclonal Antibody(C3606)**

CAT. NO. AMA03218

DATA

Western blot analysis of Cytochrome P450 1A2 expression in SKBR3 (A) whole cell lysates.
(Predicted band size: 58 kD; Observed band size: 72 kD)

STORAGE

Store at 4°C short term. For long term storage, store at -20°C, avoiding freeze/thaw cycles.

NOTE

For Research Use Only. Not for diagnostic, therapeutics, prophylactic or in vivo use.