

**DATASHEET**
**PDI Mouse Monoclonal Antibody(C3621)**
**CAT. NO. AMA03233**
**KEY FEATURES**

Target	PDI	Source / Host	Mouse
Reactivity	Human	Clonality	Monoclonal
Applications	WB	Conjugation	Unconjugated
Form / Buffer	Mouse IgG1 kappa. Liquid in PBS, pH 7.3, 30% glycerol, and 0.01% sodium azide.	Storage	at-20°C

**BACKGROUND**

This multifunctional protein catalyzes the formation, breakage and rearrangement of disulfide bonds. At the cell surface, seems to act as a reductase that cleaves disulfide bonds of proteins attached to the cell. May therefore cause structural modifications of exofacial proteins. Inside the cell, seems to form/rearrange disulfide bonds of nascent proteins. At high concentrations and following phosphorylation by FAM20C, functions as a chaperone that inhibits aggregation of misfolded proteins. At low concentrations, facilitates aggregation (anti-chaperone activity). May be involved with other chaperones in the structural modification of the TG precursor in hormone biogenesis.

**APPLICATION**

To ensure optimal assay performance, AREX recommends conducting reagent titration tailored to each testing system for optimal detection results.

WB	1:1000 - 1:2000
----	-----------------

\*Results are sample-specific. Please refer to your local assay conditions and test parameters for reference.

**PRODUCT OVERVIEW**

Description	Mouse monoclonal antibody to PDI
Specificity	Recognizes endogenous levels of PDI protein.
Antibody Type	Primary antibody
Immunogen	Recombinant fusion protein of human PDI. The exact sequence is proprietary.
Purification	This antibody is purified through a protein G column.
Molecular Weight	Predicted: 57 kD; Observed: 57 kD
Form/Buffer	Mouse IgG1 kappa. Liquid in PBS, pH 7.3, 30% glycerol, and 0.01% sodium azide.
Alternative Names	ERBA2L; PDI; PDIA1; PO4DB; Protein disulfide-isomerase; PDI; Cellular thyroid hormone-binding protein; Prolyl 4-hydroxylase subunit beta; p55
Gene Symbol	P4HB
Entrez Gene	5034(Human)
SwissProt	P07237(Human)

\*AREX continuously optimizes our products. Webpage content may not reflect the latest updates. For inquiries, please contact [info@arexbio.com](mailto:info@arexbio.com) or your local distributor.

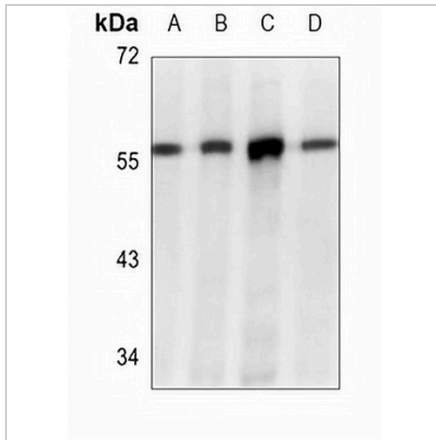
\*Clone Number, Reactivity, Source/Host and Clonality can be found in the product name and Key Features section above.

**DATASHEET**

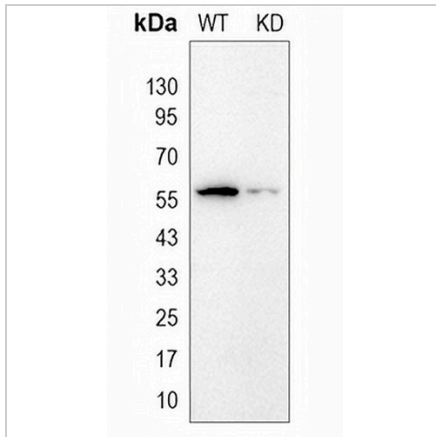
**PDI Mouse Monoclonal Antibody(C3621)**

CAT. NO. AMA03233

**DATA**



Western blot analysis of PDI expression in HeLa (A), MCF7 (B), HepG2 (C), PANC1 (D) whole cell lysates. (Predicted band size: 57 kD; Observed band size: 57 kD)



Western blot analysis of PDI expression in wild type (WT) and knockdown (KD) HeLa cell lysates.

**STORAGE**

Store at 4°C short term. For long term storage, store at -20°C, avoiding freeze/thaw cycles.

**NOTE**

For Research Use Only. Not for diagnostic, therapeutics, prophylactic or in vivo use.